


Livpure 

Livpure 



HAMARA SAR

- ✓ SAR group was founded in 1988 by great visionary Mr. Rakesh Malhotra.
 - ✓ The group of companies started with the marketing and distribution of DB UPS, Inverters & Standard Batteries. The Power Electronics operations began in 1994.
 - ✓ The group has a dedicated workforce of over 4000 employees globally with presence in depth and width of India
 - ✓ The Group takes pride to have the position of market leader in DC-AC Inverters in Asia Pacific. We are also second largest manufacturers of Deep Cycle Battery in India.
- 



Livpure 

SAR GROUP OF COMPANIES

LUMINOUS
MOBILE ACCESSORIES

LUMINOUS
WATER TECHNOLOGIES PVT. LTD.

fly
mobile
carry your attitude!


NAVITAS
GREEN POWER (FUEL MANAGEMENT) PRIVATE LTD.

Livpure 

Lectrix 

Wynncom
Mobiles

World Ace
— Care that makes you smile —


NCUBATE
Incubating excellence



ABOUT LUMINOUS WATER TECHNOLOGIES

- ✓ **Luminous Water Technologies**, started under the SAR Group, has been formed not only with business as the core premise but also SAR Group's passion towards environment and safer world for tomorrow's generations.
- ✓ The core focus of LWT would be availability of water from source to table, water treatment, Water Purification, total water management solutions, waste water treatment, waste water management for customers, homes, communities (rural and urban) and Industries.



LIVPURE ADVANTAGES



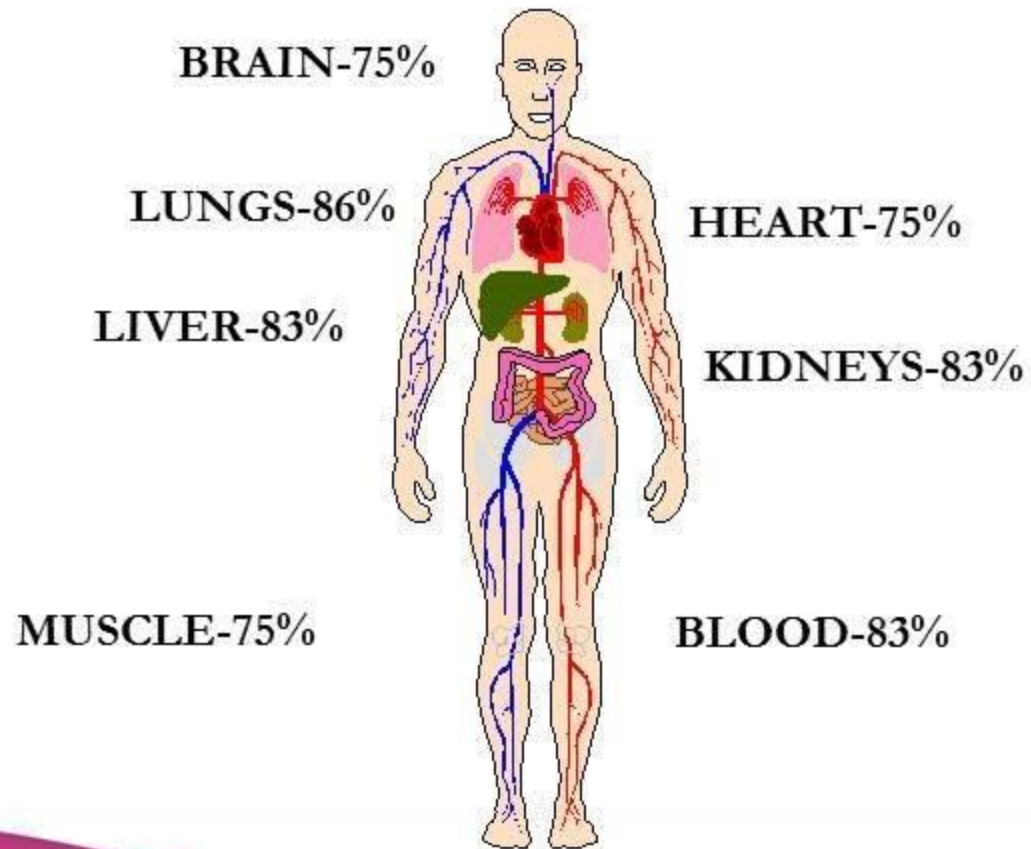
- ✓ India's most advanced RO with Intelligent RO technology
 - ✓ India's 1st Smart RO Water Purifier
 - ✓ TDS level (tested upto) 2000 ppm
 - ✓ Advanced ergonomics to suit your modern life style
 - ✓ Advanced filter change indication system
 - ✓ Strong After Sales Support
 - ✓ Color choices
 - ✓ Next Generation Design
 - ✓ Lab set with association with Ivy League Institutions in USA
 - ✓ Meeting IS 10500, IS 14543, IS 13428 standards
 - ✓ WQA, WHO and BIS Standards
 - ✓ Tested from TUV
 - ✓ Tested from Spectro Laboratory
 - ✓ WQA certified
-
- A decorative graphic at the bottom of the slide consists of several overlapping, wavy bands in shades of pink, magenta, and purple, creating a sense of motion and modernity.

Manufacturing & Innovation Strength

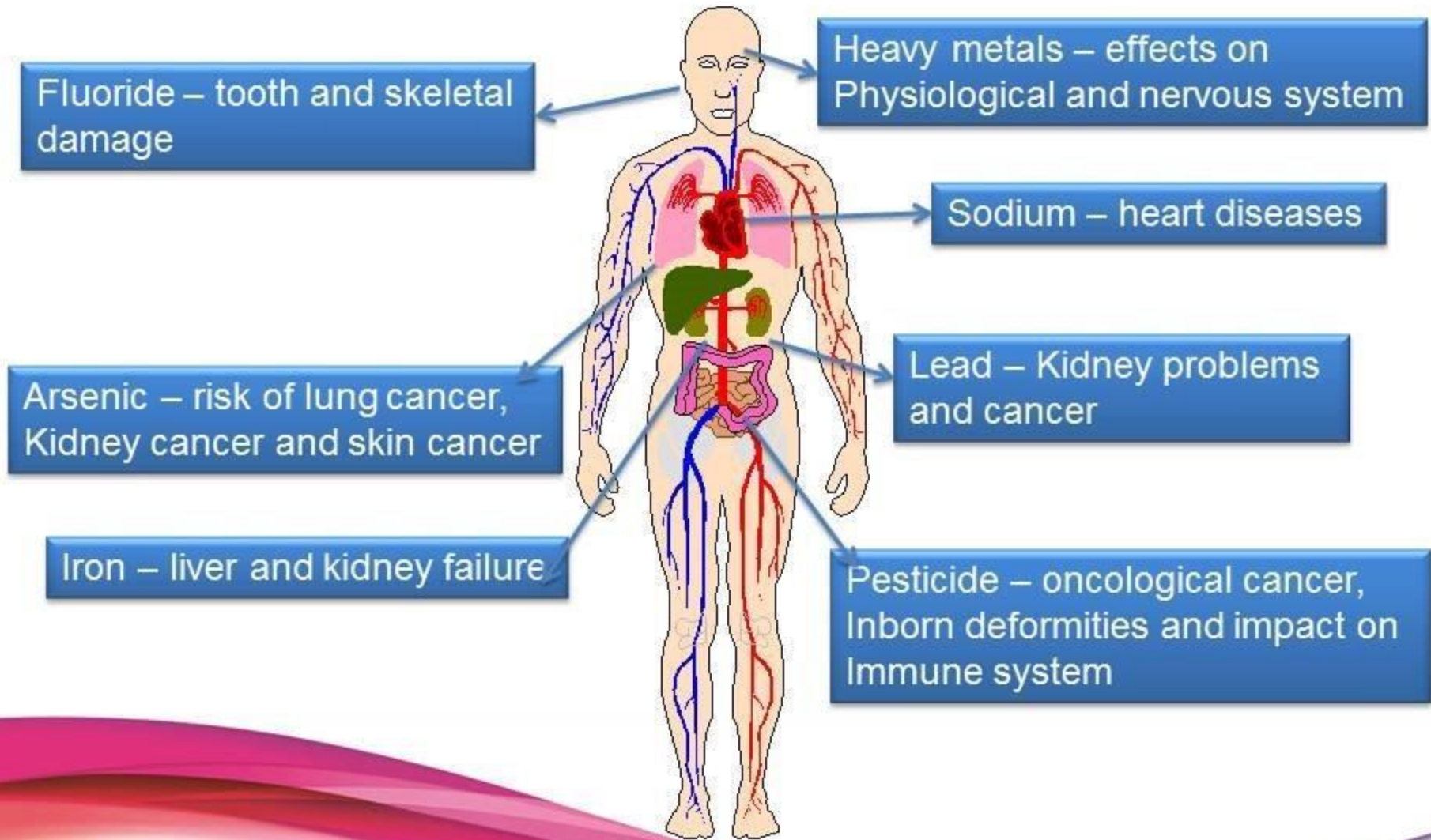
- ✓ Innovation lab set up in association with Ivy league institutions in USA.
- ✓ 120,000 sq ft of production area.
- ✓ 10,000 sq ft of R&D facility.
- ✓ Member WQA



WATER & HUMAN BODY



POLLUTION & ITS IMPACT



- ✓ 99.9999% Bacterial Reduction
- ✓ 99.99% Viral Reduction
- ✓ 99.9 % Parasite Reduction
- ✓ >99.0 % Removes Organic impurities (Chlorine, Trihalomethane, PAHs, Lindane and other insecticides)
- ✓ As per WQA, WHO, NSF and BIS standards
- ✓ No colony observed when input having 1.0 Crore Bacteria per liter
- ✓ 100% Color reduction



Contamination	Caused Disease	Removal By Technology			
		Livpure RO Water Purifier	Ultra Violet Purifiers	Boiling	Gravity/Chemical /Off Line Purifiers
Sodium	Heart Disease	Yes	☒	☒	☒
Calcium	Kidney Stone	Yes	☒	☒	☒
Magnesium	Kidney Stone	Yes	☒	☒	☒
Lead	Nephralgia, Mental Retardation	Yes	☒	☒	☒
Copper	Indigestion	Yes	☒	☒	☒
Mercury	Pain	Yes	☒	☒	☒
Nitrate	Blue Baby Syndrome	Yes	☒	☒	☒
Bacteria	Bacterial Disease	Yes	Yes	Yes	Yes
Pyrogen	Fever	Yes	☒	☒	☒
Virus	Viral Disease	Yes	Yes	Yes	Yes
Fluoride	Fluorosis	Yes	☒	☒	☒
Arsenic	Cancer	Yes	☒	☒	☒
Iron	Constipation,Dysentery	Yes	☒	☒	☒
Insecticides & Pesticides	Cancer	Yes	☒	☒	☒

RO Series

Product Family

Livpure



Touch



Touch Plus



Magna



Envy



Envy Plus



Pep



Pep Plus



UTC -7 Stage



UTC -5 Stage



UTC -
without
Stand

UV+ UF Series

Livpure[®]



Glitz (UV+ UF)
with Storage



Touch (UV+ UF) online
without storage



OFFLINE (GRAVITY) WATER PURIFIER



**Brahma- 24 Liters with ABS
Food grade – UF
Technology**



**Brahma Neo- 24 Liters
with PP, Food grade –
USEPA Technology**



**FIT - 17 Liters with PP,
Food grade – USEPA
Technology**

COMMERCIAL SERIES



1 25 – 25 LPH
(RO+ UV+ Taste
Enhancer)



1 50 – 50 LPH
(RO)

Envy (RO+ UF+ Taste Enhancer)

Livpure[®]



- ✓ Remove one billion bacteria & virus in 1 Ltr of Water.
- ✓ Taste Enhancer.
- ✓ Membrane is designed for upto 2000 ppm level of TDS in water.
- ✓ Convenient shutter Tray filling glass or bottle.
- ✓ Customer Choice of multiple colours as per kitchen décor.
- ✓ Specially Designed High Flow Tap “ Release water upto 2.5 Ltr./Minute .
- ✓ Easy to clean Tank .
- ✓ Elegant Look suiting modern/stylish Kitchens.
- ✓ Company Ownership- Service Model
- ✓ Counter Top & Wall Hanging options.

Envy Plus (RO+ UV+ UF+ Taste Enhancer)

Livpure[®]



- ✓ Remove one billion bacteria & virus in 1 Ltr of Water.
- ✓ Taste Enhancer.
- ✓ Membrane is designed for upto 2000 ppm level of TDS in water.
- ✓ Convenient shutter Tray filling glass or bottle.
- ✓ Customer Choice of multiple colours as per kitchen décor.
- ✓ Specially Designed High Flow Tap “ Release water upto 2.5 Ltr./Minute .
- ✓ Easy to clean Tank .
- ✓ Elegant Look suiting modern/stylish Kitchens.
- ✓ Company Ownership- Service Model
- ✓ Seven Stage Purifier
- ✓ Counter Top & Wall Hanging options

Touch (RO+ UV+ Taste Enhancer)

Livpure[®]



- ✓ India's 1st most advanced touch technology RO.
- ✓ India's 1st Push button water dispensing RO.
- ✓ Designed to suits your modern Lifestyle.
- ✓ Advanced Filter Change Indicator System.
- ✓ Customer Care no on LCD display.
- ✓ No of liters purified will be shown on display.
- ✓ Advanced multi dispensing options to choose from i.e One Glass, One Bottle, Continuous Flow etc.
- ✓ Next Generation Design to suits modern Life style.
- ✓ Anti Scalant Filter- Protect Membrane and increase its life.
- ✓ Membrane is designed for upto 2000 ppm of TDS level in water.
- ✓ Seven Stage Purifier

Touch Plus (RO+ UV+ UF+ Taste Enhancer)

Livpure



- ✓ India's 1st most advanced touch technology RO.
- ✓ India's 1st Push button water dispensing RO.
- ✓ Designed to suits your modern Lifestyle.
- ✓ Advanced Filter Change Indicator System.
- ✓ Customer Care no on LCD display.
- ✓ No of liters purified will be shown on display.
- ✓ Advanced multi dispensing options to choose from i..e One Glass, One Bottle, Continuous Flow etc.
- ✓ Next Generation Design to suits modern Life style.
- ✓ Anti Scalant Filter- Protect Membrane and increase its life.
- ✓ Membrane is designed for upto 2000 ppm of TDS level in water.
- ✓ Seven Stage Purifier

Magna (Tank 11 Ltr) (RO+ UV+ UF+ Taste Enhancer)

Livpure[®]



- ✓ India's 1st most advanced touch technology RO.
- ✓ India's 1st Push button water dispensing RO.
- ✓ Designed to suits your modern Lifestyle.
- ✓ Advanced Filter Change Indicator System.
- ✓ Customer Care no on LCD display .
- ✓ No of liters purified will be shown on display.
- ✓ Advanced multi dispensing options to choose from.
- ✓ Next Generation Design to suits modern Life style.
- ✓ Higher water storage capacity of 11 liters suitable for medium/large families.
- ✓ Anti Scalant Filter- Protect Membrane and increase its life.
- ✓ Membrane is designed for upto 2000 ppm level of TDS in water

PEP (Tank 7 Ltr) (RO+ Post Carbon)

Livpure[®]



- ✓ Power On, Purification Process and Tank Full Indication.
- ✓ Elegant and Sleek Design
- ✓ Taste Enhancer
- ✓ Tank Capacity of 7 Liters.
- ✓ 75 GPD Membrane.
- ✓ Wall Hanging design.
- ✓ Remove Turbidity, Chlorine, inorganics like Calcium, Magnesium and a wide range of hazardous organics like pesticides and THMs.
- ✓ Remove bacteria, viruses, protozoa including cysts.

PEP Plus (Tank 7 Ltr) (RO+ UV+ Taste Enhancer)

Livpure[®]



- ✓ Power On, Purification Process and Tank Full Indication.
- ✓ Elegant and Sleek Design
- ✓ Taste Enhancer
- ✓ Tank Capacity of 7 Liters.
- ✓ 75 GPD Membrane.
- ✓ Wall Hanging design.
- ✓ Remove Turbidity, Chlorine, inorganics like Calcium, Magnesium and a wide range of hazardous organics like pesticides and THMs.
- ✓ Remove bacteria, viruses, protozoa including cysts.

UTC – 5 & 7 Stage (Tank 8 Ltr) (RO+ UV+ UF+ Taste Enhancer)



- ✓ 12 LPH Filtration Capacities .
- ✓ Auto Pressure Tank .
- ✓ All Impurities (0.0001 micron size) in the water are totally removed .
- ✓ Easy auto flushing system.
- ✓ Attractive Tap for filling mineral water.
- ✓ Easy to install under kitchen sink or hang on wall.
- ✓ Easy Service Model.
- ✓ High quality adaptor and Pumps are being used.
- ✓ Seven Stage Smart Filtration.
- ✓ Does not require frequent cleaning.



- ✓ Germ Guard
- ✓ 100% pure water Capacity
- ✓ 4 & 5 Stage advance purification stage
- ✓ Unmatched purification capacity of 4000 Liters.
- ✓ Non Electric Water Purifier
- ✓ Does not require frequent cleaning.
- ✓ Shelf Life – 3 Years in packed & seal condition.
- ✓ Conform to Standards – USEPA, WQA for bacterial & cyst reduction.
- ✓ Storage Capacity of 17 & 24 Liters.
- ✓ Cartridge : A) UF based (5 stage)
B) USEPA certified disinfection cartridge (4 stage)



i 25, 25 LPH (RO+ UV+ Taste Enhancer)

Livpure[®]



- ✓ High quality adaptor and Pumps are being used.
- ✓ 25 LPH product capacity - Capable to handle commercial rqmt .
- ✓ Five Stage Smart Filtration.
- ✓ Wall Mount design to save space .
- ✓ Does not use Chlorine, iodine in purification process.
- ✓ Does not require frequent cleaning.
- ✓ Ideal for removing even smallest particles from the drinking water



- ✓ High quality adaptor and Pumps are being used.
- ✓ 50 LPH product capacity - Capable to handle commercial rqmt.
- ✓ Five Stage Smart Filtration .
- ✓ Wall Mount design to save space.
- ✓ Does not use Chlorine, iodine in purification process.
- ✓ Does not require frequent cleaning.
- ✓ Ideal for removing even smallest particles from the drinking water



- ✓ Elegant & Sleek Design
- ✓ Product assembly based on D-I-Y (Do it yourself) concept
- ✓ 4-Stage advance Purification system
- ✓ e-Monitoring of UV intensity
- ✓ Customer interface with Power, Process & Filter Life Indications
- ✓ Equipped with double protection of Ultra Filtration & UV Disinfection
- ✓ Removes turbidity, residual chlorine, hazardous organics like pesticides, herbicides, THMs, colour & odour from water
- ✓ Smart Power Saver Technology-Auto Shut off UV lamp when not in use for 10 minutes
- ✓ Wall Mount Installation
- ✓ Forward Flushing option
- ✓ Tray for Glass/Bottle filling
- ✓ 360° Swivel type faucet
- ✓ 365 days customer care support. Quick & Customer friendly service
- ✓ Alerts you in the event of:
 - Low UV intensity
 - Solenoid Valve Failure
 - Filter Life/Replacement
- ✓ Purifier with smart water dispensing as & when you wish
 - Free Flow
 - Custom Flow

Glitz – (UV+UF) with Storage

Livpure[®]



- ✓ 4-stage advance Purification system
- ✓ Elegant & Sleek Design
- ✓ Customer interface with Power On, Purification Process & Tank Full Indication
- ✓ Purified water storage capacity of 7 liters (approx.)
- ✓ Equipped with double protection of Ultra Filtration & UV Disinfection
- ✓ Removes turbidity, residual chlorine, hazardous organics like pesticides, herbicides, THMs, colour & odour from water
- ✓ Extra Protection with UF Cartridge to remove Cysts, Giardia & Cryptosporidium
- ✓ e-Monitoring of UV intensity
- ✓ Wall Mount Installation
- ✓ 365 days customer care support. Quick & Customer friendly service
- ✓ System will continuously diagnose, health of critical components and let user know in the event of malfunctioning/failure:
 - Low Input Water Pressure – Power Indicator (Red) indicates solid with purification & storage tank indications off
 - Ultra Violet Lamp / LDR – Power Indicator (Red) blinking @ 1 second with purification & storage tank indications off
 - Solenoid Valve – Power Indicator (Red) blinking @ 0.5 second with purification & storage tank indications off

Air purifier Series

Livpure

Smart O2
580



Fresh O2
450



Fresh O2
130



Fresh O2 -
CAR



SmartO₂ 580



USPs	<ul style="list-style-type: none">• 1ST air purifier with Wi-Fi capability• Control through android mobile app.• Unique design for 360° air inlet & 580m³/hr CADR
CADR	580m ³ /hr
Room Area	750 Sq. ft.
Filter Stages -5	<ul style="list-style-type: none">• Pre Filter• Cold Catalyst Filter• Activated Carbon Filter• HEPA Filter• Negative Ion Generator
Mobile App Modes	<ul style="list-style-type: none">• Weekend Mode• Intelligent Mode• Child Sleep Mode• Reservation Mode
Display Indications	<ul style="list-style-type: none">• Outdoor PM Indicator*• Indoor PM Indicator• Indoor Humidity• Indoor Temperature



FreshO₂ 450

Livpure[®]

USPs	<ul style="list-style-type: none">• High CADR• Aromatherapy• Fan Speed : 5 Levels• Automatic mode
CADR	450 m ³ /hr
Room Capacity	500 sq. ft.
Filter Stages- 5	<ul style="list-style-type: none">• Pre filters• Cold catalyst filter• Coconut shell activated carbon• Deep seaweed mud• High efficiency HEPA filter
Removes	Bacteria , smoke , dust, pollen formaldehyde
Air Quality Light Indicator	4 GRADE : RED (Worse) VIOLET (Poor) GREEN (Good) BLUE (Excellent)



FRESHO₂ 130

Livpure[®]

USPs	<ul style="list-style-type: none">• Sleek Design• Anion Generator for inducing positive emotions• Fan Speed : 3 Levels
CADR	130m ³ /hr
Room Capacity	200 Sq. ft.
Filter Stages -4	<ul style="list-style-type: none">• Pre Filter• Cold Catalyst Filter• HEPA Filter• Activated Carbon Filter
Removes	<ul style="list-style-type: none">• Smoke• Dust• Pollen• Formaldehyde
Air Quality Display	3 Grades : Red (Worse) Green (Good) Blue (Excellent)



FreshO₂ Car Purifier



USPs	<ul style="list-style-type: none">• Reduces bad odour in car• Has anion generator for inducing positive emotions• Very premium sleek design• Ideal for cigarette smokers
Filter Stages-3	<ul style="list-style-type: none">• Pre Filter• HEPA Filter• Activated Carbon Filter
Removes	<ul style="list-style-type: none">• Smoke• Dust• Formaldehyde• Pollen
Air Quality Display Light	3 color grade : Red (Poor) Green (Good) Blue (Excellent)



Certification



- ✓ An ISO: 9001 : 2008 and EN ISO 14001:2004 certify manufacturing facilities.
- ✓ Member “Water Quality Association”.
- ✓ Certified Water Professionals from WQA.
- ✓ Performance test from Spectro Laboratory.
- ✓ Performance Test from TUV SUD South Asia
- ✓ Performance Test from Intertek
- ✓ Life Test from TUV SUD South Asia
- ✓ CE Certification from UL Lab
- ✓ Food Grade test for all components, connectors, tubing and tanks.
- ✓ NSF (Under Process).
- ✓ WQA GOLD SEAL (under Process).



Awards & Recognition

- ✓ **3 UNESCO Awards 2 years in a row**
- ✓ **Fastest Growing RO Water Purifier Brand.**
- ✓ **Most Innovative Up-Coming Water Purifier 2012-2013**
- ✓ **Most Innovative Water Purifier 2013-2014**
- ✓ **Won India's Most promising Brand Award by E&Y**



National Activities



National & International Activities

Livpure 



International Activities

Livpure 



Thanks..

