

2012 Product Guide



SHANTUI®
VALUE THAT WORKS

Shantui Construction Machinery Co., Ltd.

ADDRESS:
No. 58 G327 Highway
Jining City, Shandong, CHINA

TEL: +86-537-2909351 2909368 2909369
FAX: +86-537-2311219
EMAIL: trade@shantui.com
WEB: www.shantui.com



Shantui Construction Machinery Co., Ltd.
is a flagship member of the Shandong
Heavy Industry Group newly formed in 2009.

© 2012 Shantui

SHANTUI®
VALUE THAT WORKS

SHANTUI: CHINA'S KING OF THE HILL IN BULLDOZERS IS NOW HIGHLY DIVERSIFIED

Since its founding in 1980, the name Shantui has been synonymous with bulldozers in China. And for good reason: Shantui consistently has held more than a 65% share of market in bulldozers in China, and is now the world's Number One producer and seller of bulldozers, all under our own brand name.

Today, Shantui stands for much more than bulldozers. Through an aggressive diversification plan over the past few years, the Company has rapidly expanded into many other construction and road machinery product lines, including excavators, wheel loaders, rollers, motor graders, forklifts, concrete truck mixers and trailers, truck cranes, pipe-layers and much more. The diversification has more than doubled the Company's revenues in just three years, and has placed Shantui on the cutting edge of complete construction machinery suppliers in China.

Another of Shantui's main selling points is its dominant position in parts and components. Shantui actually makes its own structural parts, including arms, tracks,

undercarriages, roller sets, buckets, and also makes its own transmissions, torque converters and much more for a wide range of construction machinery products. Unlike most of its competitors in China, Shantui is not merely an assembler of machines, but rather builds them from scratch. Many of Shantui's competitors are also its customers when it comes to parts. It's one more reason why Shantui is able to offer better value in the product.

The Shantui brand is now seen in more than 120 countries and regions worldwide. The Company's diversification effort has been matched by an equally aggressive internationalization effort. Today, Shantui is one of China's leading multinational companies and brands, winning top accolades not only at home but abroad, too. And, it has the

global sales and service network necessary to support its rapid growth internationally.

In the following pages, you will also see for yourself that Shantui is China's Value Leader, offering a unique balance between high performance and great price.

And, you will also see that while the bulldozer remains the Company's flagship product line, Shantui is now making a name for itself well beyond bulldozers.

▲ Much of Shantui's operations are headquartered in a massive yet well-organized industrial park in Jining.



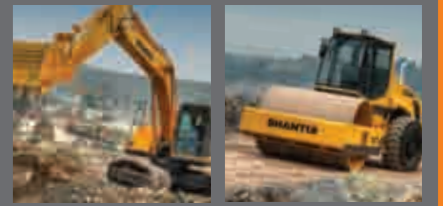
SHANTUI®
VALUE THAT WORKS™

Broadly diversified product lines.



TABLE OF CONTENTS

2 Bulldozers	32 Excavators
3 SD08, SD10YE, SD13	33 SE70, SE80, SE90, SE130
4 SD16 Series	36 Concrete Machinery
6 SD22 Series	37 CONCRETE TRUCK MIXER SERIES: HJC5257GJB, HJC5258GJB/2
8 SD23, SD32, SD42-3	38 (continued) HJC5250GJB, HJC5256/2/3, HJC5259GJB, HJC5310GJB, HJC5311GJB
10 SD52-5	39 CONCRETE PUMP TRUCK SERIES: HJC5270THB-37m, HJC5320THB-45/47m, HJC5330THB-47m, HJC5160THB 26 m
12 Trimming Dozers	40 (continued) HJC5390THB-48m, HJC5391THB-49/51m
14 Bulldozer Optional Equipment	41 CONCRETE PUMP TRAILER SERIES: HBT60, HBT6008Z, HBT6014, HBT8016R, HBT8016R-I
16 Pipelayers	42 TRUCK-MOUNTED LINE PUMP SERIES: HJC5120THB, HJC5120THB-1
18 Road Rollers	44 Forklifts
19 SR04D-5, SR14D, SR2124S	45 SF20 Series, SF25 Series, SF30 Series, SF35 Series, SF50 Series, SF60 Series, SF70 Series, SF100 Series
20 SR12-5, SR12P-5, SR14M-2	46 Drill Rig
21 SR16, SR16P, SR18	SER-22
22 SR18M, SR18M-2, SR19, SR19P	48 Parts and Components
23 SR20M, SR20MP, SR22M, SR22M1, SR26T, SR26-5	52 Specifications
24 Compactors	
SR28MR-3, QS300	
26 Motor graders	
27 SG16-3, SG18-3, SG21-3	
28 Wheel Loaders	
29 SL20W, SL30W, SL50W	
30 SL50WA, SL60W	



Product availability is subject to change.

BULLDOZER SERIES

Shantui is the world's undisputed **King of the Hill** in bulldozer production and sales.

For more than 30 years Shantui has led the industry in China, and is by far China's largest exporter of bulldozers. Indeed, Shantui bulldozers provided much of the construction muscle that drove China's spectacular economic development over the past 25 years.

The bulldozer represents the top of the food chain in construction machinery, and as such, was a great place for Shantui to start. Today, the Company has spread its wings with a broadly diversified line of products covering nearly the entire gamut of construction machinery. But it was undeniably the bulldozer that paved the way for Shantui's stunning rise in this rapidly growing global industry.

With bulldozers, Shantui does not rely entirely on its laurel as China's Value Leader. In addition to providing higher performance for great value, Shantui bulldozers are simply known and

appreciated by customers worldwide for their outstanding ability to get hard jobs done efficiently and with low cost. In other words, while they do not have all the bells and whistles of top foreign competitors, they can be counted on to do the actual work for much less cost. Owners and operators both appreciate a machine that can get the job done for less cost, and faster.

Moreover, Shantui dozers are easier to maintain, and in most cases can be repaired at the work site in a matter of hours, not days. The dozers are consistently heavier and more stable than their nearest competitors, and are

thus able to deliver great performance on the toughest of jobs. And, they have an incomparable safety record to boot. Another reason Shantui dozers are reliably tough for less money? Shantui itself makes all the structural parts, such as the undercarriage, tracks, buckets, roller sets, torque converters, transmissions and more. Indeed, Shantui sells these components to its Chinese competitors, giving it a clear edge on price for the final assembled product. Shantui builds dozers from scratch. It does not merely assemble them.

Another important feature of Shantui bulldozers is the offering of a broad range of types for different work environments. Shantui's inventory includes specialized dozers for forests, swamps, deserts, highlands, power plants (coal e.g.), dams and ports, landfills and, of course, road construction of any type. Shantui also offers a variety of self-made blade types, cabins and rippers, along with a choice of top brand power plants.

WHEN IT COMES TO BULLDOZERS, SHANTUI IS THE CLEAR BRAND CHOICE, AND THE VALUE LEADER.

The **SD32** Series begins to show Shantui's prowess with high efficiency push factors. These are heavy-duty machines that get the biggest jobs done fast and efficiently.

Rated Power: 235kW@2000rpm
Engine Model: Cummins NTA855-C360S10
Operating Weight: 37.2 Tons



The **SD08** is the smallest dozer in Shantui's lineup. It is designed for smaller volume tasks, but is also a workhorse for durability and rugged applications. Don't let size fool you.

Rated Power: 59kW@2350rpm
Engine Model: Weichai WP4G90E235
Operating Weight: 7.65 Tons

The **SD10YE** bulldozer is the first product that we currently have for sale in the United States.

The Cummins engine meets the Tier III/Stage III A European and USA emission standards, and is electronically controlled.

This dozer was designed for smaller work projects, but it has our trademark characteristics of being environmentally friendly, highly economical and above all, it's a reliable little beast!

Rated Power: 74kW@2200rpm
Engine Model: Cummins QSB4.5
Operating Weight: 9.1 Tons

For mid-range volume work, the **SD13** does the work in good time. A smaller version of our best-selling SD16 line, but with all the durability and reliability of its larger cousin series.

Rated Power: 95.5kW@1900rpm
Engine Model: Shangchai SC8D143G2B1
Operating Weight: 13.7 Tons



BULLDOZER SERIES

SD16 Series

Shantui's top selling model. It comes in a variety of types to handle forest, swamp, highland, desert, power plant (coal), landfill and normal construction projects.

Did you know that in 2010 Shantui became the world's largest producer and seller of bulldozers? * All under our own brand name to boot!

*Data provided by: Off Road Magazine, UK



SD16TL ▲
Use: Swamp
Mechanical Transmission
Rated Power: 120kW@1850rpm
Engine Model: Shangchai SC11CB184G2B1/
Weichai WD10G178E25
Operating Weight: 18.4 Tons



▲
Use: General
Rated Power: 120kW@1850rpm
Engine Model: Shangchai SC11CB184G2B1/
Weichai WD10G178E25
Operating Weight: 17 Tons



SD16C ▲
Use: Coal
Rated Power: 120kW@1850rpm
Engine Model: Shangchai SC11CB184G2B1/
Weichai WD10G178E25
Operating Weight: 16.8 Tons



SD16F ▲
Use: Forest
Rated Power: 120kW@1850rpm
Engine Model: Shangchai SC11CB184G2B1/
Weichai WD10G178E25
Operating Weight: 17.5 Tons



SD16L ▲
Use: Swamp
Rated Power: 120kW@1850rpm
Engine Model: Shangchai SC11CB184G2B1/
Weichai WD10G178E25
Operating Weight: 17.5 Tons



SD16R ▲
Use: Waste Management
Rated Power: 120kW@1850rpm
Engine Model: Shangchai SC11CB184G2B1/
Weichai WD10G178E25
Operating Weight: 17.7 Tons



Bulldozer Series

BULLDOZER SERIES

SD22 Series

Like the SD16, the National Quality Gold Medal winning SD22 Series provides a wide range of types, while offering more power and greater efficiency to get jobs done faster.



SD22R SD22G OPTION ▲
Use: Waste Management,
(G) Low temperatures
Rated Power: 162kW@1800rpm
Engine Model: Cummins NT855-C280S10
Operating Weight: 26 Tons



SD22W ▲
Use: Mining
Rated Power: 162kW@1800rpm
Engine Model: Cummins NT855-C280S10
Operating Weight: 23.44 tons



SD22S ▲
Use: Swamp
Rated Power: 162kW@1800rpm
Engine Model: Cummins NT855-C280S10
Operating Weight: 25.7 Tons



SD22 ▲
Use: General
Rated Power: 162kW@1800rpm
Engine Model: Cummins NT855-C280S10
Operating Weight: 23.4 Tons



SD22C ▲
Use: Coal
Rated Power: 162kW@1800rpm
Engine Model: Cummins NT855-C280S10
Operating Weight: 24.6 Tons



SD22D ▲
Use: Desert
Rated Power: 162kW@1800rpm
Engine Model: Cummins NT855-C280S10
Operating Weight: 25.8 Tons



SD22E ▲
Use: Muddy Terrain
Rated Power: 162kW@1800rpm
Engine Model: Cummins NT855-C280S10
Operating Weight: 24.6 Tons



SD22F ▲
Use: Forest
Rated Power: 162kW@1800rpm
Engine Model: Cummins NT855-C280S10
Operating Weight: 23.4 Tons



BULLDOZER SERIES

Large Series

Shantui Value really shines in the larger models that feature stronger push force for less cost than their nearest competitors.



SD23 ▲
Use: General
Rated Power: 169kW@2000rpm
Engine Model: Cummins NT855-C280S10
Operating Weight: 24.6 Tons



SD32 ▲
Use: General
Rated Power: 235kW@2000rpm
Engine Model: Cummins NTA855-C360S10
Operating Weight: 37.2 Tons



SD32D ▲
Use: Desert
Rated Power: 235kW@2000rpm
Engine Model: Cummins NTA855-C360S10
Operating Weight: 37.2 Tons



SD32W ▲
Use: Mining
Rated Power: 235kW@2000rpm
Engine Model: Cummins NTA855-C360S10
Operating Weight: 38 Tons



The SD42-3 is a monster machine that competes well with the best of foreign competitors. Its roller suspension technology is on par with them, as is its power and push.

Rated Power: 310kW@2000rpm
Engine Model: Cummins KTA19-C525
Operating Weight: 53 Tons



The SD52-5 is the largest bulldozer ever produced in China. Shantui makes these behemoths on special order. Seeing a machine this size and with this power with your own eyes is truly awesome.

Rated Power: 392kW@1800rpm
Engine Model: Cummins QSK19
Operating Weight: 67.5 Tons



Over 1.8 meters (6 feet)

This is one beast that will **lighten** your burden.

The name Shantui has long been synonymous with bulldozers in China. We lead the market in just about every category of volume and share, and have for decades. Today, Shantui is the largest volume manufacturer of dozers in the world.

We offer a complete line of more than 20 dozer types and sizes, from swamp to desert, designed for all tasks, big or small. This includes the entire gamut of extensions for many other practical uses. Our SD52-5, at 520 horsepower, is the largest bulldozer ever built in China.

Being the market leader in China is one thing. But being the Value Leader worldwide is our real source of pride. And we will not rest on either of these laurels. *It's the Shantui Way.*

SHANTUI VALUE WORKS FOR YOU.



TRIMMING DOZERS

These highly efficient machines are equipped with a power transmission and have flexible and convenient operating systems. Shantui Trimming Dozers can be

used for various tasks in a wide range of work sites, such as materials handling and trimming at ports and diffuse materials work at power plants and wharfs.



SB08E-3 ▲
 Use: Muddy Terrain
 This model also comes in a swamp track version, the SB08S.

Rated Power: 55 kW
 Engine Model: Weichai WP4G90E235
 Operating Weight: 8 Tons



SB11 ▲
 Use: General

Rated Power: 78 kW
 Engine Model: Weichai WP6G115E235
 Operating Weight: 11.87 Tons



SB11S ▲
 Use: Swamp

Rated Power: 78 kW
 Engine Model: Weichai WP6G115E235
 Operating Weight: 12.8 Tons



SB13 ▲
 Use: General

Rated Power: 95.5 kW
 Engine Model: Shanghai SC8D143G2B1
 Operating Weight: 14.7 Tons

BULLDOZER SERIES

Optional Equipment

Shantui's value proposition is greatly enhanced by the fact that we produce our own structural parts for our machines, including accessories such as blades, rippers, track assemblies and cabs. We also offer a variety of excellent engine choices for the bulldozer series.

Engines



Rippers



▲ Single Shank



▲ Three-shank

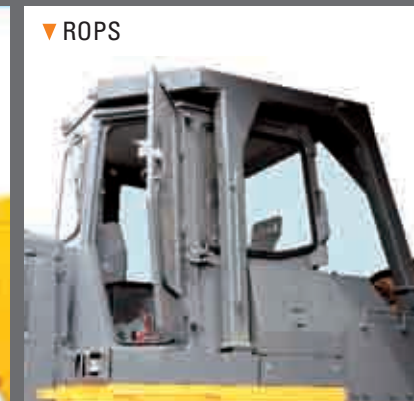
Winch



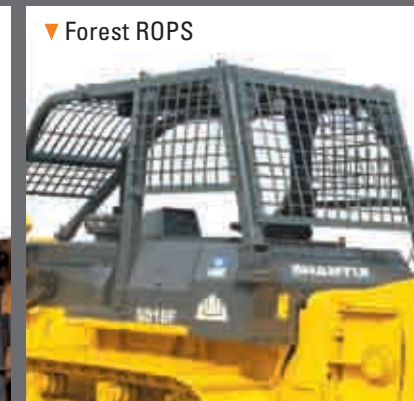
Cabins



▼ Hexahedron Cabin



▼ ROPS



▼ Forest ROPS



▼ Canopy

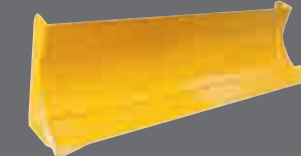
Blades



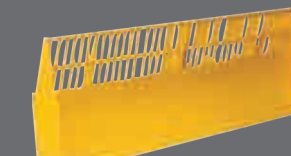
▲ U



▲ Semi U



▲ Angle



▲ Waste Management



▲ Straight Tilt



▲ Six-Way Power

FOR COMPLETE INFORMATION ON SHANTUI BULLDOZER PARTS AND COMPONENTS, PLEASE CONSULT YOUR NEAREST SHANTUI DEALER.

PIPELAYER SERIES

Getting into the pipelayer market was an easy decision for Shantui some thirteen years ago. Why?

Because these pipelayers are cousins of Shantui's world-leading bulldozer line. Rather than just "Frankenstein" together parts and snap them on a bulldozer, Shantui actually went the extra length to create a specialized product for this use.

The result is a line of pipelayers that are as rugged and durable as Shantui's famous bulldozers. The line consists of four models, the SP25Y, SP45Y, SP70Y and the behemoth SP100Y. These are a fully mature product line in Shantui's broadly diversified product base.



In typical Shantui style, these machines are still at it after years of laying enough pipeline to cross China itself.

SP25Y ▶



SP45Y ▶



SP70Y ▶



Pipelayer Series

ROAD ROLLER SERIES

Perhaps Shantui's second most **mature product line**, rollers make up a large portion of the company's overall product offerings.

That's after only 11 years in the business. Today, Shantui makes more than 15 different models of rollers, suitable for a wide variety of tasks and levels of compacting, specially in road and other paving projects. Shantui also makes compactor versions that handle heavy-duty tasks in landfills, for example.

These rollers are all born of a rich history in research and development at Shantui. Though a much more simple machine than Shantui's hallmark bulldozers, rollers tend to focus more on such differentiating factors as the vibratory technology, user controls and comfort, and also exterior design, at all of which Shantui excels. In fact, Shantui researchers

on this product line have long focused on the overall crucial factor of the machine's longevity. It shows, as Shantui rollers are besting the competition in China, and now making a name for themselves abroad.

The more inviting exterior designs and cabin ergonomics of Shantui rollers help create greater creature comforts

and ease of controls for the operator. This leads to getting more work done in a shorter amount of time.

ANOTHER FINE EXAMPLE OF SHANTUI VALUE.

The SR22 Series sports a few extras such as imported ball bearings, a higher grade gearbox and a Cummins engine.



The SR04D-5 is a fifth generation roller designed specifically for treatment of top surface areas for roads and other forms of pavement. It's one of our smaller rollers for this purpose, but has been a real workhorse over the years. It includes a water cooling element over the barrels.

The SR14D is also excellent for top layers of pavement, specially asphalt, as the machine incorporates a state-of-the-art water cooling element on the roller barrels. Its wider, lower stance to the ground gives the operator a feeling of more stable control, without losing any visual range.

The SR2124S is mostly used for compacting base materials. It brings a high degree of efficiency to bear on "first layer" tasks.



Road Roller Series

ROAD ROLLER SERIES

The SR12-5 and SR12P-5 are Shantui's top exported types of rollers. They are mainly used for compacting middle layers, and have DANA drive systems.

The SR12 also comes in the new generation SR12-3 model.

Shantui's SR16, SR18 all use hydraulics, with the 18 series also incorporating DANA drive systems.



SR10 ▲



SR12-5 ▲



SR14M-2 ▲



SR16 ▲



SR16P ▲



SR18 ▲

Many of the "P" models are not shown. The "P" stands for sheep pad, which is also available on the SR10, SR12, SR14M-2, SR14D, SR16, SR18, SR20, SR22, SR26, SR30T-3 and SR20M series.



ROAD ROLLER SERIES

The SR18M-2 is similar in use to the 14M-2 and the 18M/MP, yet sports a few extras such as imported ball bearings, a higher grade gearbox and a Cummins engine. The SR20M and SR20MP are similar to these, only larger. Same goes for the SR22 series.



SR18M ▲



SR18 ▲



SR20M ▲



SR22M ▲



SR26T ▲

The SR26T also comes in a new generation SR26T-3 version. On its heels is the SR30T-3.



SR18M-2 ▲



SR19P ▲



SR20MP ▲



SR22MP ▲



SR26-5 ▲

Shantui's Big Daddy roller, which can handle large projects such as dams, berms, ports and more.

COMPACTORS

The SR28MR-3 is designed specifically for waste management and landfill compactor use.



SR28MR-3 ▲

The QS300 is the result of cooperation between Shantui and Vandel of France. Shantui provides the structural parts and attachments, and Vandel supplies the rest. It is used mainly in waste dumps and landfills.



QS300 ▲

One rolls over
the competition.
The other flattens
your costs.

Either way, Shantui Value is working for you.

Following in the tracks of our hugely successful bulldozers, our road rollers are now among our best-performing product lines. We offer a complete line of vibratory, compactor, static and double drum rollers that roll over the competition in terms of their performance, reliability and value.

Motor graders are a new line for us, and are picking up steam in the market thanks to their roots in Shantui's other successful product lines. Our graders feature the latest technology in steering, transmission and blade movement.

IT'S THE SHANTUI WAY.



MOTOR GRADER SERIES

Since their addition to Shantui's product line up a few years back, motor graders have gradually **flattened the competition** with superior performance and very attractive value.

Today, Shantui produces motor graders both for the domestic market and for export.

Perhaps the chief selling point of these graders is the fact that the operator has extended visibility, and is even able to view all the working parts of the machine

below. This wider range of visibility contributes to the cost efficiency of the machine, getting work done more accurately and faster. And because Shantui is the nation's

construction machinery leader in manufacturing, efficiency, quality and control, these machines come off the line at a very attractive price point.

AGAIN, SHANTUI
VALUE AT WORK FOR
YOU!

Motor grader models include the SG16-3, SG18-3 and SG21-3. All are similar in characteristics, except for the graduated engine size and power ratings. The "3" stands for 3rd generation.



SG16-3 ▶



SG18-3 ▶



SG21-3 ▶



WHEEL LOADER SERIES

Unlike its bulldozer line that has been China's runaway market leader for decades, the wheel loader represents a relatively new product line for Shantui.

That said, however, Shantui is rapidly making headway into wheel loader markets both in China and abroad. It's the power of the brand name combined with a superior manufacturing and quality control process that has allowed Shantui to make rapid advances in market share in the wheel loader segment.

The machines also have much to say about that. They are heavier, stand higher and have greater lift capacities than similar offerings of most Chinese competitors. The gearbox is typically more powerful and stable, as Shantui tends to use larger versions of gearboxes in smaller models of machines. In the SL20W, SL30W and SL60W models, Shantui offers its own version of configurations in which the torque converter and gearbox are separate, giving the wheel loader the extra benefit of having more gear speeds (four in forward, two in reverse).

In addition, Shantui provides the structural parts itself, along with the torque converter and gearbox, giving it a pricing edge over mere assemblers. The smaller models offer three different engine types, depending on user preferences (Cummins, Xichai and Weichai), while the larger models add the choice of Shanghai engines. Due to these factors and more, Shantui is able to offer a machine that packs more performance for the money.

In a market where wheel loaders tend to look the same and perform the

same, one thing clearly stands out in Shantui's favor: Superior service. And superior manufacturing and quality control learned from the many years as China's leader in bulldozers and through its joint venture with Komatsu in making excavators in China.

THE RESULT? NOT ALL WHEEL LOADERS ARE CREATED EQUALLY.



The SL50W also comes in a WA version that offers a shorter wheel base for a much more efficient turn radius. SL50W comes with a choice of Shanghai, Weichai or Cummins engines.

From the SL20W on up, Shantui wheel loaders offer the latest safety features, such as the anti-explosion design in the engine compartment. They come with various adaptable fittings such as pitch forks, timber forks, side dumping hoppers, rock buckets, bale loaders, underground loaders and more.

The SL30W, at the mid-range in size and performance, offers auto-lubrication in the bucket and arm joints. It comes with a choice of three engines: Xichai, Weichai Deutz and Dongfeng Cummins.

The SL50W series offers a choice of three engine types: Weichai, Shanghai and Dongfeng Cummins. This machine offers tremendous stability and has pilot controls designed for reduced work intensity, and is Shantui's best seller.



Wheel Loader Series



WHEEL LOADER SERIES

The SL50WA features greater mobility and turning radius thanks to a shortened wheel base. It has all the power and lifting force of its cousin. It also sports a novel fuel tank that swings out for easier filling.

The best feature of the SL60W series, other than its sheer size, is its tubeless tires that offer deeper treads for greater traction. It offers all the advantages of the 50W Series but with upgraded performance, strength and efficiency.



SL50WA ▲



SL60W/SL60W-2 ▲

It's time to haul in some huge savings.

With Shantui value.

The one sure way to achieve that is with a Shantui wheel loader. We make wheel loaders of all sizes and horsepower, and also offer various extension parts to tackle most challenges at the work site. No job is too big or complex for these beasts. All while keeping your costs low and profits higher. It's the Shantui Way.

The competition was hoping Shantui would stick with its market leading bulldozers, and leave well-enough alone. Too bad. Now, Shantui is making strong inroads into other construction machinery products. The wheel loader is yet another example of how we are making our way down from the top of the food chain in construction machinery...

SHANTUI VALUE WORKS FOR YOU.



EXCAVATOR SERIES

One of Shantui's unique strengths in China is its more than fifteen year **joint venture with Komatsu of Japan** in making excavators.

Shantui puts that valuable experience to work with its limited line of smaller scale excavators. Since many customers want to have package deals from Shantui, Shantui carries its brand on excavators made by JCM/Strong, our sister company in the Shandong Heavy Industry Group.

Shantui stands behind the JCM-made product as it does its own brand name products. And, with its valuable experience gained from its excavator joint venture, Shantui is able to excel in the critical areas of technical and production line management, and quality control. This experience shows with all Shantui product lines, and it is now apparent in our limited excavator line.

FOR THE FULL LINE OF SHANTUI EXCAVATORS, PLEASE CONSULT YOUR NEAREST SHANTUI DEALER.

The engine is the heart of any machine, and Shantui excavators are fitted with imported Cummins engines, cutting back on energy use and increasing efficiency.

Shantui excavators let you go with what works, for less.



EXCAVATOR SERIES

Shantui excavators are fitted with imported Cummins engines, cutting back on energy use and increasing efficiency.

Our new generation of electronic control systems comes with a large color screen, providing real-time operational oversight and malfunction diagnosis and recording functions.

The main hydraulic parts are imported from famous Japanese manufacturers, for high work efficiency and stability.

New cabs and seats provide the operator with extra comfort, with all new interior designs and A/C systems.

Our excavators can also be fitted with jackhammers and compactors.



SE70 ▲



SE90 ▲



SE80 ▲



SE130 ▲

Buried with high costs? **Dig yourself out** with Shantui value.

Shantui's JCM-made excavators do the trick.

Shantui's limited line of small excavators are made by our sister company JCM/Strong, also a member of the Shandong Heavy Industry Group. And, you get all the quality and value of any Shantui branded product.

For starters, the machines come with Shantui-made structural and undercarriage parts and incorporate top brand name hydraulics from abroad. The small to mid-range models use Weichai engines, China's top brand of diesel engines for construction machinery. Larger, optional models include Cummins engines.

EITHER WAY, YOU'RE GETTING SHANTUI VALUE IN THE OVERALL PRODUCT. ISN'T IT TIME FOR YOU TO GO WITH WHAT WORKS, FOR LESS?



CONCRETE MACHINERY

In 2008, Shantui added concrete machinery to its **growing portfolio of construction machinery** product lines by purchasing Chutian.

Located in Wuhan, in central China, Chutian has decades of experience making the entire gamut of concrete machinery, including concrete truck mixers, truck-mounted concrete pumps, trailer pumps, truck-mounted line pumps, concrete batching plants, and more.

While Chutian is an older established brand, Shantui immediately began to implement its superior manufacturing processes and know-how to the Chutian production lines. The result is a company that is now poised to take over the 3th position in China's vast market.

The combination of Chutian's 20-year experience in concrete machinery and Shantui's mature QC and parts and service network, appears to be a winner.

THINK OF IT AS MATURE PRODUCTS MEET MATURE SYSTEMS.



In 2009, Nikko 26m and 28m boom pump truck technology was introduced by Shantui. The HJC5270THB truck mounted concrete pump is one of Shantui Chutian's most mature products, with very sound QC behind it.

CONCRETE TRUCK MIXER SERIES

Since 2008, Shantui concrete truck mixers have outraced the domestic market in terms of growth and are now picking up steam in several export markets abroad.

HJC5257GJB ▼
Undercarriage: Isuzu



HJC5258GJB/2 ▼
Undercarriage: CNHTC Howo



Concrete Truck Mixer Series

CONCRETE TRUCK MIXER SERIES (continued)

Shantui concrete truck mixers come with planetary gearbox transmissions for smooth shifting, strong wide frames for increased stability and low centers of gravity, and reinforced front and rear axle suspension systems for safety and maneuverability. They have excellent visibility and spacious, ergonomically designed cabs.



HJC5250GJB ▲



HJC5256GJB/2/3 ▲
The 5256 also comes in newer generations (the 5256-2 and 5256-3) that offer a host of upgraded features.

TRUCK-MOUNTED CONCRETE PUMP SERIES

Standard configurations on all models include German hydraulic systems, Swedish high-tensile steel for the booms and outriggers, centralized lubrication systems, automatic reversal if clogs occur and proprietary blade design for improved concrete suction. These pump trucks are specifically designed for easy maintenance. They also have three modes of operation: Electronic panel operation, wireless remote and manual emergency controls.



HJC5270THB 37M ▲



HJC5320THB 45M/47M ▲



HJC5259GJB ▲



HJC5310GJB ▲



HJC5311GJB ▲



HJC5160THB 26M ▲ Nikko's exclusive electronic controls offer smooth reversal.



HJC5330THB 47M ▲

TRUCK-MOUNTED CONCRETE PUMP SERIES
(continued)



HJC5390THB 48M ▲

Comes with an imported Isuzu (Japan) undercarriage and engine.



HJC5391THB 49M/51M ▲

CONCRETE TRAILER PUMP SERIES

The HBT60 trailer pump features much in the way of Japanese technology and is Shantui's best-selling concrete product in China. It has hydraulic controls, is more efficient, cleaner and carries less breakdown risk for similar products in its size range. Overall, it is a very tested machine over the past 20 years.



HBT60 ▲



HBT6008Z ▲



HBT6014 ▲

The HBT6014 has electronic controls and is one of Shantui's top exported model.



HBT8016R ▲



HBT8016R-I ▲

TRUCK-MOUNTED LINE PUMP SERIES

Standard configurations include a hydraulic control pilot reversal mechanism, redundant overflow protection, powerful swing force, automatic piston retraction technology and outrigger multi-direction valve for simpler movements. A fully isolated hydraulic motor ensures overall functioning protection.



HJC5120THB ▲

Shantui Chutian was the first in China to introduce truck-mounted line pumps.



HJC5120THB-1 ▲

Our diversification plan is now **set in concrete**, too.

We recently added concrete machinery to our growing portfolio of construction machinery. With the acquisition of Chutian in Wuhan, China, Shantui took a giant leap toward meeting our goal of offering a complete line of construction-related machinery.

This acquisition under the Shantui name has served to solidify Shantui as a top multinational brand from China. It's another concrete example of our progress toward diversification and internationalization.

But one thing has not changed. Whether it's construction machinery or concrete handling equipment, Shantui is uniquely able to offer a great balance of performance, quality and price.

IT'S WHAT WE CALL SHANTUI VALUE.

▲ Shantui has a full line of truck-based and trailer-based concrete handling machinery.



FORKLIFT SERIES

In 2007, Shantui decided to put its **construction machinery production prowess** behind a new line of products, somewhat removed from road construction —Forklifts.

The gambit is starting to pay off some handsome dividends as the product line is quickly moving up the ladder in terms of domestic market share in China. Some models are also seeing a rise in exports, with Shantui exporting more than a thousand units in 2010, out of its total production of slightly more than 5,000 units.

The real story, however, may be the relative speed with which Shantui built the forklift line into a mature product category virtually overnight. In a short four years, it already makes a well-rounded different models with several variations within each model category. The machines range in size from 1.5-ton to 10-ton. They come in both electric and diesel versions.

As with other products new to the company's product offerings, Shantui provides the structural parts, while most of the other parts are bought from top brand name suppliers in China. The exception is the electronic controls, which are imported from Curtis in the USA.

Several of the models are Tier III compliant, depending on engine or motor type. They all come with optional, optimal lift heights.

Overall, the forklift line is another clear demonstration of Shantui's unrivaled value proposition:

HIGH PERFORMANCE FOR
EXCEPTIONAL VALUE.



The SF30 and SF35 Series are Shantui's production leaders. They are three-ton and three-and-a-half-ton diesel models.



The entry level SF20D Series is designed for interior use. It comes with a small footprint and green emissions standards for interior work environments. They come with Curtis controls and an integrated steering wheel and instrument panel. The SF20D is electric and comes with a 24-battery pack.

The SF25 and SF25T are diesel models with a lift capacity of 2.5 tons. They also feature Bosch fuel injectors (like the 20 Series) for stable idle speeds, low noise and USA Tier II emissions. They have a very efficient hydraulic take-off port for quick response.

The SF50, SF60 and SF70 are five-, six- and seven-ton lifters, respectively. They are diesel powered. The engine and frame are mounted thru the shock block to isolate shock and enhance driver comfort.

The Big One is the SF100, a ten-ton lift capacity monster that is diesel powered and is normally used in exterior work environments. It also features a double set of front tires.



Forklift Series



SER22 ▲

Other models also available.

DRILL RIG

The Company's diversification took another big leap with this behemoth. The Shantui SER22 Rotary Drilling Rig is a pile driving machine which can be used on construction sites with pile foundations for pouring to meet all pouring and pile driving requirements. The SER22 works safely and efficiently, performing a wide range of functions, while remaining environmentally friendly. It's the ideal machine for foundation piling on highways, railways, bridges, skyscrapers and urban construction projects.



China's King of The Hill never rests on his laurels.

In China, Shantui's name is synonymous with bulldozers. In fact, we have been King of the Hill for decades, and now our dozers have cleared the way for our growth in offering a complete line of construction machinery and cement handling equipment.

While diversification and internationalization are both key strategies, our main focus remains on Shantui Value. Shantui offers a unique balance of performance and price that no one else can deliver. And, we never stray from the cultural values that have made us a Top China Brand, and one of China's leading multinational firms. *It's the Shantui Way.*

SHANTUI VALUE WORKS FOR YOU.



PARTS AND COMPONENTS

One of the hallmarks of the Shantui success story in China is our **dominant position in the production of all types of parts and components** for construction machinery.

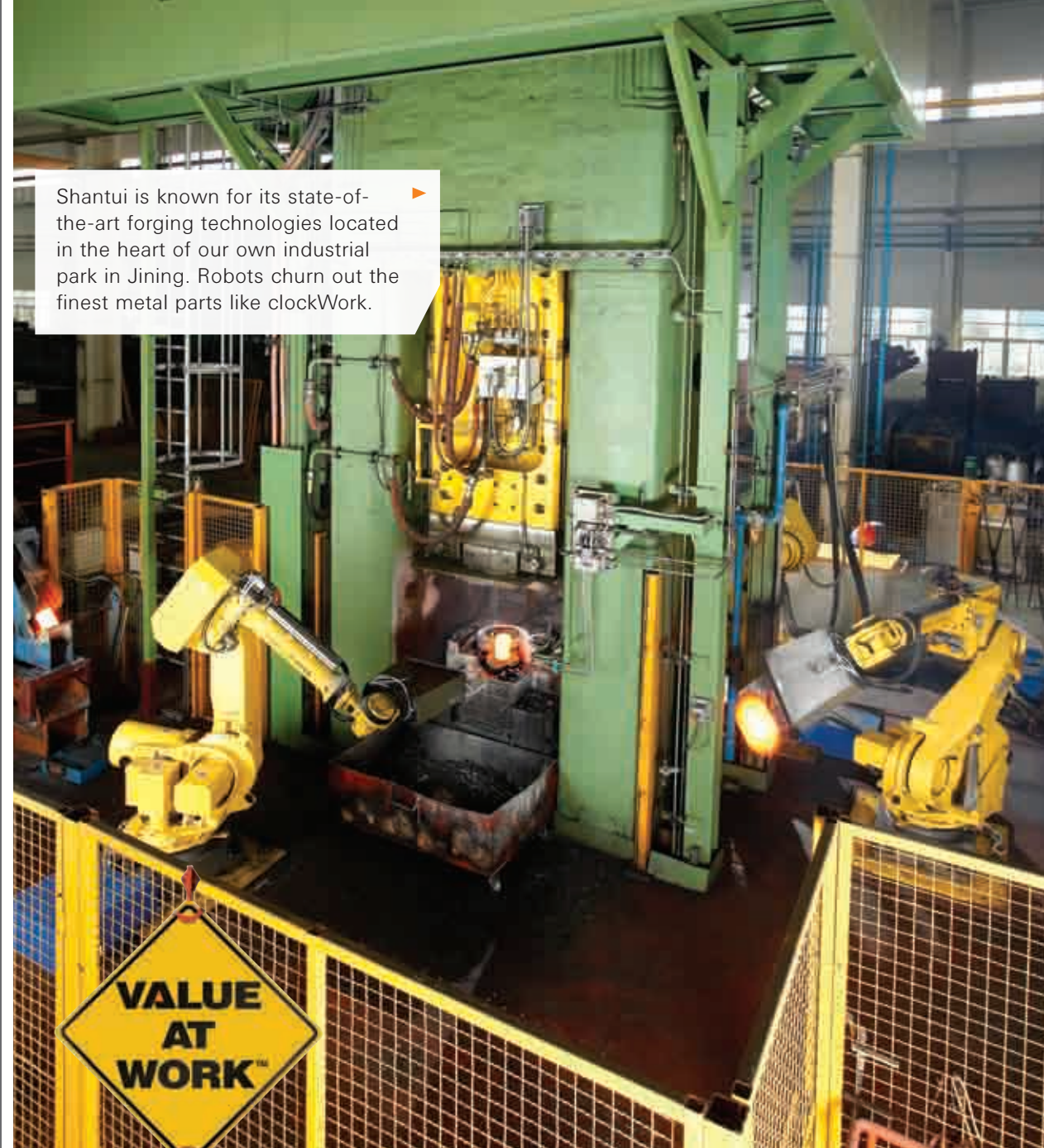
Shantui actually makes its own structural parts, including arms, tracks, undercarriages, roller sets, buckets, and also makes its own transmissions, torque converters and much more for a wide range of construction machinery products. Unlike most of its competitors in China, Shantui is not merely an assembler of machines, but rather builds them from scratch. Many of Shantui's competitors, both domestic and foreign, are also its customers when it comes to parts. It's one more reason why Shantui is able to offer better value in the finished product.

Leadership in the parts infrastructure is an important outcome of Shantui's advantageous location in China's industrial heartland. The natural resources, materials and distribution networks are easily sourced from our location in Shandong Province. With

these logistics, and our decades of leadership, Shantui is better able to offer greater value to its customers, lowering our costs to help raise your profits.

IT'S THE SHANTUI WAY.

Shantui is known for its state-of-the-art forging technologies located in the heart of our own industrial park in Jining. Robots churn out the finest metal parts like clockwork.



Easy Installation. Simple design makes for easy cleaning and mounting and dismantling of the main links, assuring reliability and high endurance.

High-temp, inductive hard surfaces ensure the best strength and wear-resistance.

Crack-proof. After the bushing material is cold-extruded, the steel fiber can be distributed evenly. Carburization then ensures sufficient core hardness and wear-resistance of the surface.

Strength. Special heat treatment and quenching ensures the strong wear-resistance of the pin shaft for anti-bump, anti-stress and consistent strength, which is critical to the process.

All-around Adaptability. Track shoes include single-tooth, double-tooth, as well as swamp type, to meet all variations of work conditions, with strong wear-resistance and enduring performance.

Transmissions. At Shantui, we make our own transmissions for our bulldozer lines. This is a key component in our vertical integration, further contributing to our trademark value proposition.



The competition was hoping we'd only make bulldozers. Sorry.

China's King of the Hill in bulldozers is now plowing through the competition with a diverse line of construction machinery products, including these beasts, crane trucks, forklifts, drilling rigs and a complete line of cement handling equipment. The bulldozer, which sits at the top of this food chain, paved the way for our successful diversification.

Diversification is one thing Offering a unique balance of performance, quality and price is yet another hallmark of Shantui Value. Shantui now excels at both of these pursuits on its path toward becoming one of

China's most respected multinational brands.

Value is important. But so are values. At Shantui, we take great pride in our Confucian roots and strong ethics. It is our belief that it is best to "do business today, be friends for life." You'll notice a difference in our people, who are the pillars of a corporate culture that fosters amazing loyalty within the Company and special relations with our customers around the globe.

SHANTUI VALUE, AND VALUES, WORK FOR YOU.



SHANTUI[®]
VALUE THAT WORKS

SHANTUI



WWW.SHANTUI.COM

BULLDOZER SERIES

Specifications



King
of
the
hill.

	UNIT	520 HP	420 HP	320 HP			230 HP	
MODEL		SD52-5	SD42-3	SD32	SD32D	SD32W	SD32-5	SD23
LxWxH (Ripper not included)	mm	10420x4680x4470 (Ripper included)	9630x4315x3955 (Ripper included)	6880x4130x3725	6880x4130x3725	6880x4130x2725	6880x3955x3725	5874x3725x3360
Operating weight (Ripper not included)	t	67.5 (Ripper included)	53 (Ripper included)	37.2	37.2	38	39	24.6
Engine		Cummins QSK19	Cummins KTA19-C525	Cummins NTA855-C360S10			Cummins NTA855-C400S10	Cummins NT855-C280S10
Rated power	kW/rpm	392/1800	310/2000	235/2000			235/1900	169/2000
Gradeability	°	30	30	30			30	30
Blade type		Semi-U blade	Semi-U blade	Straight tilt blade Semi-U blade Angle blade	Straight tilt blade Semi-U blade Angle blade	Straight tilt blade	Semi-U blade	Straight tilt blade U-blade Angle blade
Blade width	mm	4695x2265	4315x1875	Straight tilt blade 4130x1590 Semi-U blade 4030x1720 Angle blade 5000x1140	Straight tilt blade 4130x1590 Semi-U blade 4030x1720 Angle blade 5000x1140	4130x1590	3955x1680	Straight tilt blade 3725x1395 U blade 3860x1379 Angle blade 4365x1107
Dozing capacity	m³	18.5	16	Straight tilt blade 10 Semi-U blade 11.9 Angle blade 6	Straight tilt blade 10 Semi-U blade 11.9 Angle blade 6	10	11.7	Straight tilt blade 7.8 U blade 8.4 Angle blade 5.4
Max drop below ground of blade	mm	720	700	560	560	560	598	540
Lift height of blade	mm	1660	1545	1560	1560	1560	1241	1210
Ripper type		Single ripper	Single ripper	Single ripper Three-shank ripper			Three-shank ripper	Single ripper Three-shank ripper
Ripping depth of ripper	mm	1435	1400	Single ripper 1250 Three-shank ripper 842			871	Single ripper 695 Three-shank ripper 666
Lifting height of ripper	mm	1105	1130	Single ripper 955 Three-shank ripper 883			938	Single ripper 515 Three-shank ripper 555
Number of carriers (each side)		2	2	2			2	2
Number of track rollers (each side)		7	7	7			6	7
Number of track shoes (each side)		40	41	41			41	39
Width of track shoe	mm	610	610	560	760	560	560	560/610/660
Track gauge	mm	2500	2260	2140			2100	2000
Ground length and ground pressure	mm/MPa	3940/0.138	3560/0.123	3150/0.105	3150/0.076	3150/0.105	3210/0.107	2840/0.078
Pitch	mm	280	260.35	228.6			228.6	216
Forward speed	km/h	0-3.8	0-3.7	0-3.6			0-3.7	0-3.8
		0-6.8	0-6.8	0-6.6			0-6.7	0-6.8
		0-11.8	0-12.2	0-11.5			0-11.0	0-11.8
Reverse speed	km/h	0-5.1	0-4.4	0-4.4			0-5.0	0-4.9
		0-9.2	0-8.2	0-7.8			0-8.2	0-8.5
		0-15.8	0-14.8	0-13.5			0-13.9	0-14.3

										160 HP			UNIT	MODEL		
SD22	SD22C	SD22D	SD22E	SD22F	SD22G	SD22R	SD22S	SD22W	SD16	SD16-3(CE)	SD16C					
5750x3725x3395	5750x4200x3395	6150x4365x3395	6000x3725x3332.18	5750x3725x3395	5750x3725x3395	6290x4365x3435	6060x4365x3435	5750x3725x3395	5140x3388x3032	5140x3388x3032	5500x3900x3100	mm	LxWxH (Ripper not included)			
23.4	24.6	25.8	24.6	23.4	23.4	26	25.7	23.44	17	19.35	16.8	t	Operating weight (Ripper not included)			
Cummins NT855-C280S10									Shangchai SC11CB184G2B1/ Weichai WD10G178E25			CUMMINS QSC8.3	Shangchai SC11CB184G2B1/ Weichai WD10G178E25		Engine	
162/1800									120/1850			120/1800	120/1850		kW/rpm	Rated power
30									30			30	30		°	Gradeability
Straight tilt blade U-blade Semi-U blade Angle blade	Coal blade	Straight tilt blade	Straight tilt blade U-blade Angle blade	Straight tilt blade	Straight tilt blade	R-blade	Straight tilt blade	Straight tilt blade Angle blade	Straight tilt blade U blade Angle blade	Straight tilt blade Angle blade	U blade			Blade type		
Straight tilt blade 3725x1315 U blade 3800x1343 Semi-U blade 3725x1374 Angle blade 4365x1055	4200x1350	4365x1248	Straight tilt blade 3725x1315 U blade 3800x1343 Angle blade 4365x1055	3725x1315	3725x1315	4365x1885	4365x1248	Straight tilt blade 3725x1315 Angle blade 4365x1055	Straight tilt blade 3388x1149 U blade 3556x1120 Angle blade 3970x1040	Straight tilt blade 3388x1149 Angle blade 3970x1040	3900x1200	mm	Blade width			
Straight tilt blade 6.4 U blade 7.5 Semi-U blade 7.0 Angle blade 4.7	9	6.8	Straight tilt blade 6.4 U blade 7.5 Angle blade 4.7	6.4	6.4	12	6.8	Straight tilt blade 6.4 Angle blade 4.7	Straight tilt blade 4.5 U blade 5 Angle blade 4.3	Straight tilt blade 4.5 Angle blade 4.3	5	m³	Dozing capacity			
540	540	550	538	540	540	550	550	540	540	540	530	mm	Max drop below ground of blade			
1210	1210	1420	1210	1210	1210	1330	1330	1210	1095	1095	1095	mm	Lift height of blade			
Single ripper Three-shank ripper	Single ripper Three-shank ripper		Single ripper Three-shank ripper	Single ripper Three-shank ripper	Single ripper Three-shank ripper			Three-shank ripper	Three-shank ripper	Three-shank ripper			Ripper type			
Single ripper 695 Three-shank ripper 666	Single ripper 695 Three-shank ripper 666		Single ripper 695 Three-shank ripper 666	Single ripper 695 Three-shank ripper 666	Single ripper 695 Three-shank ripper 666			572	572	572		mm	Ripping depth of ripper			
Single ripper 515 Three-shank ripper 555	Single ripper 515 Three-shank ripper 555		Single ripper 515 Three-shank ripper 555	Single ripper 515 Three-shank ripper 555	Single ripper 515 Three-shank ripper 555			592	592	592		mm	Lifting height of ripper			
2	2	2	2	2	2	2	2	2	2	2	2		Number of carriers (each side)			
6	6	7	7	6	6	8	8	6	6	7	6		Number of track rollers (each side)			
38	38	41	41	38	38	45	45	38	37	39	37		Number of track shoes (each side)			
560	660	660	560	560	560	910	910	560	510	510	610	mm	Width of track shoe			
2000	2000	2000	2000	2000	2000	2250	2250	2000	1880	1880	1880	mm	Track gauge			
2730/0.077	2730/0.066	3050/0.070	3050/0.072	2730/0.066	2730/0.077	3480/0.041	3480/0.041	2730/0.077	2430/0.067	2430/0.067	2430/0.056	mm/MPa	Ground length and ground pressure			
216	216	216	216	216	216	216	216	216	203.2	203.2	203.2	mm	Pitch			
0-3.6	0-3.6	0-3.6	0-3.6	0-3.6	0-3.6	0-3.6	0-3.6	0-3.6	0-3.29	0-3.29	0-3.29	km/h	Forward speed			
0-6.5	0-6.5	0-6.5	0-6.5	0-6.5	0-6.5	0-6.5	0-6.5	0-6.5	0-5.82	0-5.82	0-5.82					
0-11.2	0-11.2	0-11.2	0-11.2	0-11.2	0-11.2	0-11.2	0-11.2	0-11.2	0-9.63	0-9.63	0-9.63					
0-4.3	0-4.3	0-4.3	0-4.3	0-4.3	0-4.3	0-4.3	0-4.3	0-4.3	0-4.28	0-4.28	0-4.28	km/h	Reverse speed			
0-7.7	0-7.7	0-7.7	0-7.7	0-7.7	0-7.7	0-7.7	0-7.7	0-7.7	0-7.59	0-7.59	0-7.59					
0-13.2	0-13.2	0-13.2	0-13.2	0-13.2	0-13.2	0-13.2	0-13.2	0-13.2	0-12.53	0-12.53	0-12.53					

BULLDOZER SERIES
(continued)
Specifications



	UNIT	160 HP							130 HP		
MODEL		SD16E	SD16F	SD16H	SD16L	SD16R	SD16T	SD16TL	SD13	SD13-2	
LxWxH (Ripper not included)	mm	5345x3388x3032	5345x3388x3032	5140x3388x3032	5262x4150x3074	5262x4150x3074	6366x3388x3100	5262x4150x2950	4492x3185x2950	4492x3185x2950	
Operating weight (Ripper not included)	t	17.5	17.5	17	17.5	17.7	17	18.4	13.7	13.7	
Engine		Shangchai SC11CB184G2B1/ Weichai WD10G178E25							Shangchai SC8D143G2B1	CUMMINS 6CT8.3	
Rated power	kW/rpm	120/1850							95.5/1900	95.5/1900	
Gradeability	°	30							30	30	
Blade type		Straight tilt blade U blade Angle blade	Straight tilt blade U blade Angle blade	Straight tilt blade U blade Angle blade	Straight tilt blade	Straight tilt blade	Straight tilt blade U blade Angle blade	Straight tilt blade	Straight tilt blade Angle blade	Straight tilt blade Angle blade	
Blade width	mm	Straight tilt blade 3388x1149 U blade 3556x1120 Angle blade 3970x1040	Straight tilt blade 3388x1149 U blade 3556x1120 Angle blade 3970x1040	Straight tilt blade 3388x1149 U blade 3556x1120 Angle blade 3970x1040	4150x960	4150x1578	Straight tilt blade 3388x1149 U blade 3556x1120 Angle blade 3970x1040	4150x960	Straight tilt blade 3185x1090 Angle blade 3475x915	Straight tilt blade 3185x1090 Angle blade 3475x915	
Dozing capacity	m³	Straight tilt blade 4.5 U blade 5 Angle blade 4.3	Straight tilt blade 4.5 U blade 5 Angle blade 4.3	Straight tilt blade 4.5 U blade 5 Angle blade 4.3	3.8	3.8	Straight tilt blade 4.5 U blade 5 Angle blade 4.4	3.8	Straight tilt blade 3.7 Angle blade 3.4	Straight tilt blade 3.7 Angle blade 3.4	
Drop below ground of blade	mm	540	540	540	485	485	530	495	590	590	
Lift height of blade	mm	1095	1095	1095	1005	1005	1095	1005	930	930	
Ripper type		Three-shank ripper	Three-shank ripper	Three-shank ripper			Three-shank ripper		Three-shank ripper	Three-shank ripper	
Ripping depth of ripper	mm	572	572	572			572		467	467	
Lifting height of ripper	mm	592	592	592			592		559	559	
Number of carriers (each side)		2	2	2	2	2	2	2	2	2	
Number of track rollers (each side)		7	7	6	7	7	6	7	6	6	
Number of track shoes (each side)		39	39	37	42	42	37	42	38	38	
Width of track shoe	mm	560	560	510	1100/950	1100	510	1100	460	460	
Track gauge	mm	1880	1880	1880	2300	2300	1880	2300	1880	1880	
Ground length and ground pressure	mm/ MPa	2635/0.062	2635/0.062	2430/0.067	2935/0.027	2935/0.043	2430/0.067	2935/0.027	2365/0.063	2365/0.063	
Pitch	mm	203.2	203.2	203.2	203.2	203.2	203.2	203.2	190	190	
Forward speed	km/h	0-3.29	0-3.29	0-3.29	0-3.29	0-3.29	0-2.67	0-2.67	0-3.2	0-3.2	
		0-5.82	0-5.82	0-5.82	0-5.82	0-5.82	0-3.76	0-3.76	0-5.9	0-5.9	
		0-9.63	0-9.63	0-9.63	0-9.63	0-9.63	0-5.41	0-5.41	0-9.8	0-9.8	
Reverse speed	km/h						0-11.13	0-11.13			
		0-4.28	0-4.28	0-4.28	0-4.28	0-4.28	0-3.48	0-3.48	0-3.9	0-3.9	
		0-7.59	0-7.59	0-7.59	0-7.59	0-7.59	0-4.90	0-4.90	0-7.1	0-7.1	
		0-12.53	0-12.53	0-12.53	0-12.53	0-12.53	0-7.05	0-7.05	0-11.9	0-11.9	
					0-9.92	0-9.92					

TRIMMING DOZERS



Specifications

MODEL:	SB08E-3	SB08S	SB11	SB13	SB16	SB23
Operating weight (kg)	8000	7922	11870	14700	18200	26200
Engine	Weichai WP4G90E235		Weichai WP6G115E235	Shangchai SC8D143G2B1	Shangchai SC11CB184G2B1/ Weichai WD10G178E25	Cummins NT855-C280S10
Rated power (kW)	55	58.8	78	95.5	120	169
MPa	0.044	0.031	0.062	0.067	0.073	0.081
Length (mm)	4665	4728	5110	5470	5845	6602
Width (mm)	2200	2780	2736	2908	3210	3410
Height (mm)	2669	2000	2785	2520	2532.5	3485
Length of trimming blade (mm)	2200	2780	2736	2908	3210	3410
Width of trimming blade (mm)	750	750	885	930	1000	1365
Maximum lifting height of trimming blade (mm)	1495	1560	1020	1630	1610	1727
Maximum digging depth (mm)	652	645	670	710	760	741
Blade Capacity (m³)	1.24	1.56	2.14	2.52	3.21	6.35



ROAD ROLLER SERIES

Specifications



MODEL	SR04D-5	SR14D	SR10	SR10P	SR12-3	SR12P-3	SR12-5	SR12P-5	SR16	SR16P	SR18	SR19P	SR20-5	SR20P-5	SR26-5	SR26P-5	
Operating weight (kg)	4066	14000	10120	10950	12000	12500	12300	13450	16000	16500	18050	18500	20000	20200	26000	26200	
Axle load, front (kg)	2000	7000	5980	6350	6900	7400	7100	8250	10000	10800	11350	11850	13000	13200	17000	17200	
Static linear load, front/rear (N/cm)	145/145	329/329	259	277	322	346	325	378	468	505	530	554	595	605	794	804	
Working width (mm)	1380	2130	2130	2130	2140	2140	2140	2140	2140	2140	2140	2140	2140	2140	2140	2140	
Minimum turning radius (mm)	2885	4030	5880	5880	6000	6000	5500	5500	5600	5600	5800	5800	6000	6000	6000	6000	
Drum diameter (mm)	900	1300	1500	1650	1550	1752	1550	1752	1550	1752	1550	1752	1600	1752	1600	1752	
Vibration frequency, high amplitude/low amplitude (Hz)	50/50	51/67	30/36	30/36	30/30	30/30	30/33	30/33	28/32	28/32	29/33	29/33	28/32	28/32	28/32	28/32	
Rated amplitude, high/low (mm)	0.5/0.5	0.8/0.3	2.0/1.0	1.6/0.8	1.67/0.84	1.34/0.68	1.8/1.0	1.4/0.78	1.8/0.76	1.6/0.6	1.8/0.95	1.5/0.8	1.85/1.05	1.8/1.0	1.8/1.1	1.64/1.04	
Centrifugal force, high/low (KN)	35/35	170/112	270/180	270/180	255/162	255/162	270/180	270/180	317/167	317/167	310/215	310/215	345/255	345/255	420/300	420/300	
Steering angle (°)	±30	±30	±36	±36	±36	±36	±36	±36	±36	±36	±36	±36	±36	±36	±36	±36	
Oscillating angle (°)	±10	±7	±12	±12	±12	±12	±12	±12	±12	±12	±12	±12	±10	±10	±10	±10	
Maximum climbing ability (%)	30	30	48	48	40	40	48	48	45	45	45	45	45	45	45	45	
Forward speed (km/h)	1	0-10	0-6	0-5.3	0-5.3	0-5	0-5	0-5.3	0-5.3	0-5.9	0-5.9	0-5.6	0-5.6	0-3.9	0-3.9	0-4	0-4
	2		0-8	0-9.9	0-9.9	0-7	0-7	0-9.9	0-9.9	0-9	0-9	0-7.1	0-7.1	0-6	0-6	0-5.4	0-5.4
	3		0-13			0-9	0-9					0-8.7	0-8.7	0-10	0-10	0-9.5	0-9.5
	4											0-13.5	0-13.5				
Reverse speed (km/h)	1	0-10	0-6	0-5.3	0-5.3	0-5	0-5	0-5.3	0-5.3	0-5.9	0-5.9	0-5.6	0-5.6	0-3.9	0-3.9	0-4	0-4
	2		0-8	0-9.9	0-9.9	0-7	0-7	0-9.9	0-9.9	0-9	0-9	0-7.1	0-7.1	0-6	0-6	0-5.4	0-5.4
	3		0-13			0-9	0-9					0-8.7	0-8.7	0-10	0-10	0-9.5	0-9.5
	4											0-13.5	0-13.5				
Engine model	DEUTZ D2011L31	CUMMINS QSB4.5	Weichai WP4G110E220	Weichai WP4G110E220	DEUTZ TD226B-4	DEUTZ TD226B-4	Weichai DEUTZ WP6G140E22	Weichai DEUTZ WP6G140E22	CUMMINS 6BT5.9-C150	CUMMINS 6BT5.9-C150	CUMMINS 6BTA5.9-C180	CUMMINS 6BTA5.9-C180	CUMMINS 6CTAA8.3-C215	CUMMINS 6CTAA8.3-C215	CUMMINS 6CTAA8.3-C215	CUMMINS 6CTAA8.3-C215	
Rated power (kW)	34.4	113	82	82	78	78	105	105	112	112	132	132	160	160	160	160	
Rated speed (rpm)	2600	2200	2200	2200	2400	2400	2200	2200	2500	2500	2500	2500	2200	2200	2200	2200	
Padfoot, number				80			154				154				154		
Height of the padfoot (mm)				95			95				95				95		
Overall length (mm)	2725	5208	5860	5860	5905	5905	6021	6021	5710	5710	6093	6093	6501	6501	6501	6501	
Overall width (mm)	1485	2297	2305	2305	2345	2345	2402	2362	2450	2450	2450	2450	3151	3151	3151	3151	
Overall height (mm)	2750	3060	3014	3014	3100	3100	3127	3127	2980	2980	3232	3232	2402	2402	2562	2562	

SR14M-2	SR14MP-2	SR18M	SR18MP	SR18M-2	SR18MP-2	SR20M	SR20MP	SR20M-2	SR20MP-2	SR20M-E	SR20MP-E	SR22M	SR22MP	MODEL:
14000	15100	18000	18500	18000	18500	20000	20300	20000	20300	20000	20300	22000	22800	Operating weight (kg)
7000	8100	9000	9500	9000	9500	9900	10700	9900	10700	9900	10700	10700	11500	Axle load, front (kg)
332	383	420	440	420	440	463	486	463	486	463	486	490	527	Static linear load, front/rear (N/cm)
2110	2110	2140	2140	2140	2140	2140	2140	2140	2140	2140	2140	2140	2140	Working width (mm)
6100	6100	6100	6100	6100	6100	6100	6100	6100	6100	6100	6100	6100	6100	Minimum turning radius (mm)
1550	1752	1550	1752	1550	1752	1550	1752	1550	1752	1550	1752	1550	1752	Drum diameter (mm)
30/30	30/30	30/30	30/30	28/32	28/32	28/32	28/32	28/32	28/32	30/30	30/30	28/32	28/32	Vibration frequency, high amplitude/low amplitude (Hz)
1.73/0.87	1.37/0.77	2.0/1.0	1.6/0.8	2.0/1.0	1.6/0.8	2.0/1.0	1.6/0.8	2.0/1.0	1.6/0.8	1.9/1.0	1.6/0.8	1.8/0.9	1.53/0.75	Rated amplitude, high/low (mm)
272/138	272/138	335/190	335/190	330/240	330/240	355/210	355/210	355/210	355/210	375/188	375/188	395/230	395/230	Centrifugal force, high/low (KN)
±36	±36	±36	±36	±36	±36	±36	±36	±36	±36	±36	±36	±36	±36	Steering angle (°)
±12	±12	±12	±12	±12	±12	±12	±12	±12	±12	±12	±12	±12	±12	Oscillating angle (°)
30	30	30	30	30	30	30	30	30	30	30	30	30	30	Maximum climbing ability (%)
2.5	2.5	2.2	2.2	2.1	2.1	2.55	2.55	2.55	2.55	2.3	2.3	2.55	2.55	Forward speed (km/h)
4.4	4.4	4.3	4.3	4.1	4.1	5.03	5.03	5.03	5.03	4.5	4.5	5.03	5.03	
9.7	9.7	9.1	9.1	8.8	8.8	8.3	8.3	8.3	8.3	9.5	9.5	8.3	8.3	
2.5	2.5	2.2	2.2	2.1	2.1	2.55	2.55	2.55	2.55	2.28	2.28	2.55	2.55	Reverse speed (km/h)
4.3	4.3	4.3	4.3	4.1	4.1	5.03	5.03	5.03	5.03	4.5	4.5	5.03	5.03	
						8.3	8.3	8.3	8.3			8.3	8.3	
Weichai WP6G125E22	Weichai WP6G125E22	Yuchai YC6B150Z	Yuchai YC6B150Z	CUMMINS 6BTA5.9-C155	CUMMINS 6BTA5.9-C155	Shanghai SC8D175	Shanghai SC8D175	CUMMINS 6BTA5.9-C180	CUMMINS 6BTA5.9-C180	Yuchai YC6A175Z	Yuchai YC6A175Z	Shanghai SC8D185G2B1	Shanghai SC8D185G2B1	Engine model
92	92	110	110	114	114	129	129	132	132	128	128	136	136	Rated power (kW)
2200	2200	2100	2100	2000	2000	2000	2000	2200	2200	2200	2200	2000	2000	Rated speed (rpm)
	154		154		154		154		154		154		154	Padfoot, number
	95		95		95		95		95		95		95	Height of the padfoot (mm)
6085	6085	5990	5990	5990	5990	6125	6125	6125	6125	6002	6002	6140	6140	Overall length (mm)
2315	2315	2345	2345	2345	2345	2425	2425	2425	2425	2382	2382	2410	2410	Overall width (mm)
3211	3211	3215	3215	3215	3215	3262	3262	3262	3262	3186	3186	3262	3262	Overall height (mm)

Roll over the competition.

STATIC ROAD ROLLER SERIES

Specifications



MODEL:	SR26T	SR26T-3	SR30T-3
Operating weight (kg)	14500	12900	12900
Metal ballast (kg)	7000	11500	15500
Water ballast (kg)	4500	1600	1600
Max. working weight (kg)	26000	26000	30000
Min. turning radius (mm)	9000	9000	9000
Working width (mm)	2750	2365	2365
Tire distance (mm)	490	510	510
Ground pressure (kPa)	250-420	270-480	270-480
Wheel base (mm)	3840	3840	3840
Front/rear tire overlap (mm)	50	70	70
Front tire oscillation (mm)	±50	±50	±50
Max. climbing ability (%)	20	20	20
Min ground clearance (mm)	290	290	290
Forward speed (km/h)	0-8	0-8	0-8
	0-20	0-16	0-16
Reverse speed (km/h)	0-8	0-8	0-8
Engine model	Shanghai SC8D156G2B1	Shanghai SC8D156G2B1	Shanghai SC8D180G2B1
Rated power (kW)	115	115	132
Rated speed (rpm)	2000	2000	2000
Number of tires, front/rear	5/6	4/5	4/5
Tire size	11.00-20-16pr	13/80-20-16pr	13/80-20-16pr
Overall length (mm)	5060	5010	5010
Overall width (mm)	2876	2470	2470
Overall height (mm)	3480	3350	3350

DRILL RIGS

Specifications



Model	UNIT	SER15	SER22	SER26	SER30	SER40	
Max.drilling diameter	mm	1500	2000	2000	2500	3000	
Max.drilling depth	m	65	65	65	87	110	
Rotary head	Max.output torque	KN.m	150	220	260	300	400
	Drilling speed	rpm	0-38				
Feed cylinder	Max.crowd force(pull down)	KN	150	185	185	210	460
	Max.crowd force(pull up)	KN	160	210	210	261	460
	Pull down stroke	m	4	5	5	6	16
Main winch	Max.crowd force (1st layer)	KN	160	240	260	280	400
	Max.line speed	m/ min	70	70	70	60	60
	Rope diameter	mm	28	28	32	32	40
Auxiliary winch	Max.crowd force (1st layer)	KN	50	80	80	80	130
	Max.line speed	m/min	40	60	60	45	60
	Rope diameter	mm	16	20	20	20	20
Mast tilting angle	Sideward inclination	°	±4	±5	±5	±5	±5
	Forward inclination	°	5	5	5	5	5
Engine	Type		6BTA-C	QSM11-C335	QSM11-C335	QSM11-C335	QSX15-447
	Rated power	kW	133	250	250	298	447
Undercarriage	Width of crawler	mm	800	800	800	800	1000
	Distance between tracks	mm	3000-4000	3240-4400	3240-4400	3330-4530	3700-5000
	Towing force	KN	245	459	459	541	1000
Operating weight	t	48.5	74	76	82	142	
LxWxH	Working appearance size	mm	7570×4000×18440	10200×4400×21700	10263×4400×21700	10953×4530×23853	12000×5000×30000
	Transport dimensions	mm	12902×3000×3200	15920×3240×3457	15983×3240×3457	17770×3330×3472	8000×3700×3600



EXCAVATOR SERIES

Specifications



MODEL:	UNIT	SE60	SE70	SE80	SE130	SE210	SE220	SE240	SE270	SE330	SE360
Rated power	kW/rpm	35.5/2200	45/2200	60/2200	86/2200	112/1950	112/1950	133/2000	133/2000	186/2200	186/2200
Engine		Yanmar 4TNV94L	Cummins B3.3	Cummins B3.3	Cummins B3.9-C	Cummins B5.9-C	Cummins B5.9-C	Cummins B5.9-C	Cummins B5.9-C	Cummins 6C8.3	Cummins 6C8.3
Type		4 cylinders inline	4 cylinders inline	4 cylinders inline	4 cylinders inline	6 cylinders inline	6 cylinders inline	6 cylinders inline	6 cylinders inline	6 cylinders inline	6 cylinders inline
Bore × stroke	mm	94 ×110	95 ×115	95 ×115	102 ×120	102 ×120	102 ×120	102 ×120	102 ×120	114 ×135	114 ×135
Displacement	L	3.054	3.3	3.3	3.9	5.9	5.9	5.9	5.9	8.3	8.3
Cooling		Water cooled	Water cooled	Water cooled	Water cooled	Water cooled	Water cooled	Water cooled	Water cooled	Water cooled	Water cooled
Air filter		Dry air filer	Dry air filer	Dry air filer	Dry air filer	Dry air filer	Dry air filer	Dry air filer	Dry air filer	Dry air filer	Dry air filer
Fuel tank	L	110	170	230	238	360	360	360	360	600	600
Throttle control		Electric control	Electric control	Electric control	Electric control	Electric control	Electric control	Electric control	Electric control	Electric control	Electric control
Operating weight	kg	5850	7100	7800	12800	20500	21600	24100	27300	32900	35700
Bucket width	mm	769	804	820	980	1189	1189	1259	1450	1372	1551
Dozing capacity	m³	0.22	0.28	0.32	0.55	0.9	1.2	1.2	1.3	1.4	1.6

PIPELAYER SERIES

Specifications



MODEL:	UNIT	SP70Y	SP45Y	SP45YS	SP25Y	SP25YL	SP15Y
Engine		Cummins NTA855-C360S10	Cummins NT855-C280S10		Shanghai SC11CB184G2B1/ Weichai WD10G178E25		Shanghai SC8D143G2B1
Rated power	kW/rpm	235/2000	169/2000		120/1850		95.5/1900
Maximum lifting weight	t	70	45		25		15
Operating weight	kg	47500	34000	34800	22000	23500	17500
LxWxH	mm	5560x3700x3395	4750x3700x3360	4750x4400x3375	4135x3050x3014	4385x3996x3028	3850x3220x2950
Minimum turning radius	mm	3950	3200	3600	2950	3300	3165
Track gauge	mm	2380	2250	2550	2050	2300	1880
Ground length		3620	3050	3480	2635	2935	2655
Track shoe width	mm	760	610(660)	910 (1050)	560 (610)	1100	560(700)
Ground pressure	MPa	0.086	0.086 (0.078/660)	0.053 (0.046/1050)	0.07 (0.065/ 610)	0.036	0.057 (0.046/700)
Maximum lifting height	mm	6550 8150(9.0m Boom)	5250(6.5m)		4400	4400	4400
Boom swing amplitude	m	1.2-7.2 1.2-8.8 (9.0 Boom)	1.2-6.65	1.4-6.9	1.2-5.7 (5.5 Boom) 1.2-6.3 (6.1 Boom)		1.2-5.8
Hook speed	m/min	0-6.0	0-0.6		0-12.0		0-11.0
Boom length	m	7.3 (9.0 Optional)	6.5 (9.0 Optional)		5.5 (6.1 Optional)		5.5



Time to haul.

WHEEL LOADER SERIES

Specifications



MODEL:	SL20W	SL30W	SL50W	SL50W-2	SL50W-3	SL50WA	SL60W	SL60W-2	
Engine	Luotuo LR4108G86	Xichai CA6DF1D-12GAG2	Weichai WD10G220E23	Shangchai SC11CB220G2B1	Dongfeng Cummins 6CTA8.3-C215	Weichai WD10G220E23	Shangchai SC11CB240.1G2B1	Weichai WD10G240E21	
Rated power (kW/rpm)	60/2400	92/2200	162/2000	162/2200	160/2000	162/2000	175/2200	175/2200	
Displacement (L)	4.58	6.557	9.726	10.45	8.3	9.726	9.726	10.45	
Minimum diesel consumption (g/kWh)	242	220	215	230	202	215	215	230	
Maximum torque (NM)	280	520	900	843	908	900	920	912	
Operating weight (kg)	6200	10800	17000	17000	17000	16800	19000	21000	
Dimension LxWxH (mm)	5930x2050x2850	7170x2484x3206	8054x3072x3410	8054x3072x3410	8054x3072x3410	7976x3026x3498	8351x3082x3480	8692x3082x3548	
Center distance of tires (mm)	1462	1856	2250	2250	2250	2250	2250	2250	
Wheel base (mm)	2270	2700	3250	3250	3250	2920	3200	3400	
Loading capacity (t)	2	3	5	5	5	5	6	6	
Bucket capacity (m³)	1	1.7	3	3	3	3	3.5	3.5	
Maximum traction force (KN)	54	95	162	162	162	150	167	167	
Maximum breakout force (KN)	55	96	185	185	185	160	185	185	
Static tipping load (full turn) (kg)	4000	6000	10000	10000	10000	10000	12000	12000	
Gradeability (°)	30	30	30	30	30	30	30	30	
Minimum turning radius (mm)	Outside of bucket	4519	5300	6590	6590	6590	6970	6520	6808
	Outside of tire	5090	6004	7256	7256	7256	6240	7290	7618
Turning angle (°)	35	36	36	36	36	35	36	36	
Dumping height (mm)	Standard Arm	2850	/	3178	3178	3178	3417	3238	3314
	Extended		3057	3350	3350	3350			
	Long		3200	3676	3676	3676			
Dumping reach (mm)	Standard Arm	865	/	1160	1160	1160	1100	1218	1205
	Extended		906	1110	1110	1110			
	Long		886	954	954	954			
Lifting/Lifting,dumping and lowering time (S)	4.5/8.7	5.5/9.7	5.4/10.9	5.4/10.9	5.4/10.9	5.7/10.2	5.97/12.64	5.5/11.33	
Travel speed (km/h)	Forward 1	0-5.5	0-5.8	0-13 or 0-8	0-6.54	0-13	0-8	0-8	
	Forward 2	0-11	0-10.8	0-38 or 0-15	0-10.5	0-38	0-15	0-15	
	Forward 3	0-20	0-18.4	(n/a) or 0-24	0-23.12		0-24	0-24	
	Forward 4	0-27	0-35	(n/a) or 0-38	0-40.53		0-38	0-38	
	Reverse 1	0-7.5	0-7.8	0-17 or 0-8	0-6.54	0-17	0-8	0-8	
	Reverse 2	0-24	0-27	(n/a) or 0-24	0-10.5		0-24	0-24	
Reverse 3				0-23.12					

COMPACTORS

Specifications



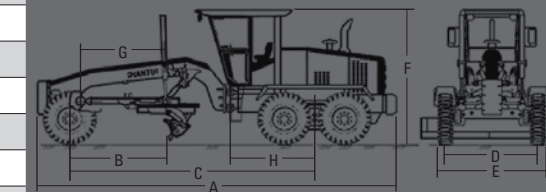
MODEL:	SR23MR	SR26MR	SR28MR-3	QS300
Operating weight (kg)	23000	26000	28000	33000
Axle load,front (kg)	11500	13000	14000	16000
Static linear load, front/rear (N/cm)	626	650	618/762	808
Working width (mm)	3090	3360	3520	3460
Min. Turning radius (mm)	6786	7250	7250	7230
Drum diameter (mm)	1620	1636	1700	1890
Steering angle (°)	±36	±36	±36	±42
Oscillating angle (°)	±7	±8	±8	±7
Max. climbing ability (%)	100	57	100	100
Max lifting height(mm)	1050	1150	1146	1100
Max cutting depth(mm)	160	165	150	120
Blade capacity(m³)	8.7	12	11	16
Wheel base (mm)	3350	3500	3500	3750
Min. ground clearance (mm)	455	435	465	660
Forward speed(km/h)	4.37	4.82	4.82	6.2
	6.82	7.66	7.66	9.8
	10	11.6	11.6	—
Reverse speed (km/h)	4.37	4.82	4.82	6.2
	6.82	7.66	7.66	9.8
Engine model	Yuchai YC6M220Z-T20	Shangchai C6121ZG16G	Shangchai C6121ZG16	CUMMINS QSM11
Rated power (kW)	162	187	187	250
Rated speed (rpm)	2200	2200	2200	2100
Overall length (mm)	7360	7940	7930	8830
Overall width (mm)	3200	3660	3660	3800
Overall height (mm)	3640	3925	3960	4480

MOTOR GRADER SERIES

Specifications



MODEL:	SG16-3	SG18-3	SG21-3	SG16-3	SG18-3	SG21-3
Engine	Cummins 6BTAA5.9-C160	Cummins 6BTAA5.9-C180	Cummins 6CTAA8.3-C215	A	B	C
Rated power (kW/rpm)	118/2200	132/2200	160/2200	D	E	F
Travel speed (km/h)	Forward 1	0-5.4	0-5.4	G	H	
	Forward 2	0-8.4	0-9.3			
	Forward 3	0-13.4	0-12.2			
	Forward 4	0-20.3	0-20.7			
	Forward 5	0-29.8	0-25.6			
	Forward 6	0-39.6	0-39.7			
Reverse 1	0-5.4	0-5.4	0-5.4			
Reverse 2	0-13.4	0-12.2	0-12.2			
Reverse 3	0-29.8	0-25.6	0-25.4			
Dimensions (LxWxH) (mm)	8726x2600x3400	8960x2600x3400	9260x2600x3400			
Minimum turning radius (mm)	7800	7800	8200			
Wheel base (mm)	2155	2155	2155			
Gradeability (°)	20	20	20			
Maximum traction (KN)	81	85.5	90			
Maximum cutting depth (mm)	500	500	500			
Operating weight (kg)	15400	16200	17000			
Blade width (mm)	3660	3660/3965	3660/3965/4270			
Blade height (mm)	635	635	635			
Blade rotational angle (°)	360	360	360			
Maximum lifting height (mm)	410	410	410			
Blade cutting angle adjustment Range (°)	44-91	44-91	44-91			
Min. ground clearance (mm)	430	430	430			
Working hydraulic system pressure (MPa)	16	16	16			
Brake System Pressure (MPa)	10	10	10			



FORKLIFT SERIES

Specifications



FRONT SINGLE TIRE			
MODEL	UNIT	SF20D	
Load capacity	kg	2000	
Load center	mm	500	
Power type		Battery	
Overall dimensions	Full length (with fork)	mm	3445
	Full length (without fork)	mm	2375
	Full width	mm	1146
	Full height	mm	2100
	Height with mast not lifted	mm	1995
	Height with mast lifted	mm	4030
	Maximum lift height	mm	3000
	Free lift height	mm	155
Min. ground clearance (at frame)	mm	140	
Front overhang	mm	483	
Wheelbase	mm	1500	
Rear overhang	mm	392	
Distance from seat surface to overhead guard	mm	1030	
Fork adjusting range	mm	245/1020	
Front wheel track	mm	960	
Rear wheel track	mm	950	
Minimum turning radius	mm	2050	
Mast inclination	deg	6/12	
Battery (voltage/capacitance)	V/AH	48/700	
Drive speed	km/h	0-14	
Full-load lifting speed	mm/sec	265	
Maximum gradeability	%	10	
Curb weight	kg	4150	
Tire	Front wheel	7.00-12-12PR	
	Rear wheel	18*7-8-14PR	

FRONT SINGLE TIRE							
MODEL	UNIT	SF20/20T	SF25/25T	SF30/30T			
General	Load capacity	kg	2000	2500	3000		
	Load center	mm	500		500		
	Power type		Diesel				
Dimensions	Lift size	mm	3000				
	Free lift height	mm	155		160		
	Fork size	mm	1070x122x40		1070x122x45		
	Mast tilt angle	deg	6/12		6/12		
	Fork overhang	mm	483		495		
	Overall dimensions	Full length	mm	2510	2580	2704	
		Full width	mm	1160		1226	
		Height with mast not lifted	mm	1990		2140	
		Height with mast lifted	mm	4030		4272	
		Overhead guard height	mm	2071		2140	
	Minimum turning radius	mm	2172	2320	2400		
	Minimum right angle passage width	mm	2200	2300	2100		
	Performance	Drive speed (full load/no load)	Hydraulic forklift truck	km/h	19/20	19/20	
			Mechanical forklift	Gear I	8.5/9	8.8/8.8	
Gear II		19/20		20/20			
Full-load lifting speed		mm/sec	420	450			
Maximum gradeability		%	20				
Curb weight		kg	3649/3628	4000/3978	4500/4474		
Wheel & tires	Tires	Front wheel	7.00-12-12PR		28*9-15-14PR		
		Rear wheel	6.00-9-10PR		6.50-10-10PR		
	Tread	Front wheel	mm	970	1000		
		Rear wheel	mm	970	980		
Wheelbase	mm	1600		1700			
Ground clearance (full load/no load)	Mast	mm	85/105	110/135			
	Frame	mm	100/105	130/135			
Drive units & control	Engine	Applicable vehicle type	SF20AT/SF25AT		SF30AT		
		Model	490BPG	ISUZU C2409KJ	490BPG	CA498	
		Rated power	kW/rpm	37/2650	34.5/2500	37/2650	42/2450
		Rated torque	N.m/rpm	148/1900	139/1800	148/1900	190/1800
		Number of cylinders		4	4	4	4
		Cylinder bore/stroke	mm	90/100	86/102	90/100	98/105
	Displacement	L	2.54	2.369	2.54	2.98	
	Transmissions	Type	Hydraulic or mechanical				
		Gear position front/rear					
	Operating pressure	Mpa	17.5				

	FRONT DOUBLE TIRE				
SF35/35T	SF50	SF60	SF70	SF100	
3500	5000	6000	7000	10000	
500	600				
Diesel					
3000					
160	195				
1070x122x50	1250x150x50			1768x173x85	
6/12	6/12				
495	627				726
2704	3460	3540	3646	4200	
1226	1995				2230
2140	2500				2800
4272	4420				4426
2140	2450				2497
2400	3250	3450	3900		
2100	2960	3090	3540		
19/20					
8.8/8.8	26/28				
20/20					
360	500	450	360		
20					
4787/4760	8183	8960	9400	12300	
28*9-15-14PR	8.25-15-14PR			9.00-20-14PR	
6.50-10-10PR	8.25-15-14PR				9.00-20-14PR
1000	1470				1600
980	1700				1722.5
1700	2250				2800
110/135	200				245/205
130/135	200				240
SF35AT	SF50/SF60/SF70			SF100	
ISUZU C240PKJ	495BPG	6102BG			
34.5/2500	42/2650	81/2500			
139/1800	174/1800	353/1700			
4	4	6			
86/102	95/105	102/118			
2.369	2.97	5.795			
Hydraulic					
2-2					
17.5	20				



CONCRETE TRUCK MIXER SERIES

Specifications



HJC5256GJB



HJC5250GJB



HJC5258GJB

MODEL:		UNIT	HJC5256GJB			HJC5256GJB2		HJC5256GJB3		
Mixer drum	Geometric volume	m ³	12.5	15.1	17.1	19.1	19.1			
	Mixer capacity	m ³	8	9	10	12	12			
	Maximum diameter inside drum	mm	2140	2300	2380	2380	2380			
	Length of mixer drum	mm	4577	5234	5337	5688	5688			
	Angle of inclination	°	15	12		12	12			
	Operating speed	rpm	0-14		0-14		0-14			
	Slump scope	mm	40-210			40-210		40-210		
Hydraulic system	Oil pump	Model	Rexroth/Eaton/Sauer			Rexroth/Eaton/Sauer		Rexroth/Eaton/Sauer		
		Max operating Pressure×Delivery capacity	MPa×ml/rev	42×90			41.5×105.5		41.5×105.5	
	Motor	Model	Rexroth/Eaton/Sauer			Rexroth/Eaton/Sauer		Rexroth/Eaton/Sauer		
		Max operating pressure ×Delivery capacity	MPa×ml/rev	42×80			41.5×105.5		41.5×105.5	
	Speed reducer	Model	PMP/ Topunion/ Sauer/ Bonfiglioli			PMP/ Topunion/ Sauer/ Bonfiglioli		PMP/ Topunion/ Sauer/ Bonfiglioli		
Max operating torque/ Speed ratio		N-m/i	60000/99.9	68000/102.8	65000/120.3	75000/129.94	75000/129.94			
Oil tank capacity	L	15 Emmegi/ Binglun			18 Emmegi/ Binglun		18 Emmegi/ Binglun			
Water supply system	Water supply method	Compressed air water supply type								
	Water tank capacity	L	350							
Vehicle chassis	Model	SX5255GJBJR364			SX5255GJBJR404		SX5255GJBDT404			
	Engine	Model	Shandong Weichai WP10.290	Shandong Weichai WP10.336		Shandong Weichai WP10.336		Shandong Weichai WP10.375		
		Type	Straight-line 6-cylinder, 4-stroke, water cooled, turbocharging, direct injection electric controlled common rail diesel engine			Straight-line 6-cylinder, 4-stroke, water cooled, turbocharging, direct injection electric controlled common rail diesel engine				
		Air delivery displacement	ml	9726			9726		9726	
		Maximum power	kW/rpm	213/1900	247/1900		247/1900		276/2200	
	Maximum torque	N-m/rpm	1390/(1200-1500)	1500/(1200-1500)		1500/(1200-1500)		1460/(1200-1600)		
	Maximum drive speed	km/h	75			75		75		
	Minimum turning diameter	m	21			21		21		
	Gradeability		35%			35%		35%		
	Wheelbase	mm	3625+1350			4000+1350		4000+1350		
Tire		11.00-20, 12.00-20, 11.00R20, 12.00R20/10			12.00R20		12.00R20			
Drive method		6×4			6×4		6×4			
Complete vehicle	Curb weight	Total	13120	13230	13760	13960	13960			
		Front/Rear	4610/8510			5600/8360		5600/8360		
	Gross weight	Total	25000			25000		25000		
		Front/Rear	7000/18000			7000/18000/		7000/18000/		
	Overall dimension (L×W×H)	mm	9186×2500×3820	9230×2500×3860	9230×2500×3875	9870×2500×3975	9870×2500×3975			

HJC5257GJB		HJC5258GJB		HJC5258GJB2		HJC5259GJB		HJC5250GJB		HJC5310GJB		HJC5311GJB	
15.1	15.1	17.1	19.1	15.09	17.1	15.09	17.1	20.4	20.4	22.06			
9	9	10	12	9	10	9	10	12	12	14			
2300	2300	2380	2380	2300	2380	2300	2380	2380	2380	2380			
5234	5234	5337	5668	5234	5337	5234	5337	6087	6087	6437			
12	12		12	12		12		11	11				
0-14	0-14		0-14	0-14		0-14		0-14	0-14				
40-210	40-210		40-210	40-210		40-210		40-210	40-210				
German Rexroth A4VTG	Rexroth/Eaton/Sauer		Rexroth/Eaton/Sauer	Rexroth/Eaton/Sauer		Rexroth/Eaton/Sauer		EATON 6423-518	Rexroth/Eaton/Sauer				
42x90	42x90		41.5x105.5	42x90	41.5x89.13	41.5x105.5		41.5x105.5	41.5x105.5				
German Rexroth AA2FM	Rexroth/Eaton/Sauer		Rexroth/Eaton/Sauer	Rexroth/Eaton/Sauer		Rexroth/Eaton/Sauer		EATON 6433-138	Rexroth/Eaton/Sauer				
42x80	42x80		41.5x105.5	42x80	41.5x89.13	41.5x105.5		41.5x105.5	41.5x105.5				
TOPUNION P68	PMP/ Topunion/ Sauer/ Bonfiglioli		PMP/ Topunion/ Sauer/ Bonfiglioli	PMP/ Topunion/ Sauer/ Bonfiglioli		PMP/ Topunion/ Sauer/ Bonfiglioli		PMP 6.5SP	PMP/ Topunion/ Sauer/ Bonfiglioli				
68000/102.8	68000/102.8	65000/120.3	75000/129.94	68000/102.8	65000/120.3	65000/120.3		75000/129.94	75000/129.94	80000/140			
15 (Italy Emmegi) Optional	15 Emmegi/ Binglun		15 Emmegi/ Binglun	18 Emmegi/ Binglun		18 Emmegi/ Binglun		18 Italy Emmegi (Optional)	18 Emmegi/ Binglun	18 Emmegi/ Binglun	30 Emmegi/ Binglun		
Compressed air water supply type													
350													
CYZ51L	ZZ1257N3847C/N1W38		ZZ1257N4048W		DFL5250GJBA		YC1250FS2PM		ZZ1317N3267C/S1W		SX5255GJBJT326		
Isuzu 6WF1A	WD615.95E		WD615.95E		L340 30		P11C-UJ		WD615.95E		Shandong Weichai WP10.375		
Straight-line 6-cylinder, 4-stroke, water cooled direct injection attached with turbocharger and intercooler, diesel engine, top-mounted camshaft, and common rail system	Straight-Line 6-Cylinder, 4-Stroke, Water Cooled Direct Injection Attached with Turbocharger and Intercooler, Direct Injection Electric Controlled EGR Diesel Engine		Straight-line 6-cylinder, 4-stroke, water cooled direct injection attached with turbocharger and intercooler, direct injection electric controlled EGR diesel engine		Straight-line 6-cylinder, 4-stroke, water cooled, turbocharging, direct injection electric controlled high-pressure common rail diesel engine		Straight-line 6-cylinder, 4-stroke, water cooled, turbocharging, direct injection electric controlled EGR diesel engine		Straight-line 6-cylinder, 4-stroke, water cooled, turbocharging, direct injection electric controlled EGR diesel engine		Straight-line 6-cylinder, 4-stroke, water cooled, turbocharging, direct injection electric controlled common rail diesel engine		
14256	9726		9726		8900		10520ml		9726		9726		
265/1800	247/1900		247/1900 276/2200		250/2200		259/2100		276/2000		276/2000		
1422/1100	1500(1200-1500)		1500(1200-1500)		1350/1400		1454/1100		1500(1200-1500)		1460(1200-1600)		
85	75		75		80		85		75		75		
14.6	19.6		19.6		21		17		23		23		
30%	30%		30%		35%		30%		30%		30%		
3645+1310	3825+1350		4025+1350		3800+1350		3640+1410		1800+3200+1350		1800+3200+1350		
295/80R22.5	12.00-20		12.00R20		11.00-20, 11.00R20, 12.00R20.		11.00R20/10		12.00-20/12		11.00-20, 11.00R20, 12.00R20.		
6×4	6×4		6×4		6×4		6×4		8×4		8×4		
12920	13870		13960		13805		13860		15960		15960		
4710/8210	4820/9050		5600/8360		4755/9050		4970/8890		4840/2520/8600		4840/2520/8600		
2500	25000		25000		25000		25000		31000		31000		
6995/17985	6995/17985		7000/18000		7000/18000		7000/18000		6500/7000/17500		6500/7000/17500		
9027x2490x3850	9310x2500x3850	9370x2500x3870	9870x2500x3975		9230x2500x3950		9115x2500x3977		10360x2500x3940		10510x2500x3977		

TRUCK-MOUNTED CONCRETE PUMP SERIES

Specifications



MODEL:	HJC5160THB 26M	HJC5270THB 37M	HJC5320THB 45M	HJC5320THB 47M	HJC5330THB 47M	HJC5390THB 48M	HJC5391THB 49M	HJC5391THB 51M	
Weight	16000kg	27000 kg	32000 kg	32300 kg	33000kg	39000 kg	391000 kg	391000 kg	
Max. speed	78km/h	89 km/h	85 km/h	85 km/h	85 km/h	89 km/h	89 km/h	89 km/h	
Dimensions	Length	9588mm	11850mm	12000mm	12000mm	12000mm	12807mm	13949mm	
	Width	2490mm	2490mm	2500mm	2500mm	2500mm	2490mm	2500mm	
	Height	3688mm	3940mm	4000mm	4000mm	4000mm	3970mm	4000mm	
Engine	Type	Water-cooled, straight 6-cylinder, 4-stroke and turbocharged diesel engine	Water-cooled, straight 6-cylinder, 4-stroke and turbocharged diesel engine	4-stroke, water-cooled direct-injection, turbo-supercharged diesel engine	4-stroke, water-cooled direct-injection, turbo-supercharged diesel engine	Water-cooled direct-injection, turbo-supercharged diesel engine	Straight 6-cylinder, water-cooled, turbo-charged intercooled and direct-injection diesel engine	4-stroke, water-cooled direct-injection, turbo-supercharged and central-cooler diesel engine, with overhead camshaft and common rail system	4-stroke, water-cooled direct-injection, turbo-supercharged and central-cooler diesel engine, with overhead camshaft and common rail system
	Model	ISME345 30	Isuzu 6WF1A	Isuzu 6WF1A	Isuzu 6WF1A	OM501 LA V6	Isuzu 6WF1D	Isuzu 6WF1D	Isuzu 6WF1D
	Displacement	10800mL	14256 mL	14256 mL	14256 mL	11946mL	14256 mL	14256 mL	14256 mL
	Power	254kW/1800rpm	265kW/1800rpm	265kW/1800rpm	265kW/1800rpm	300kW/1800rpm	287kW/1800rpm	287kW/1800rpm	287kW/1800rpm
	Emission standard	Euro III	Euro III	Euro III	Euro III	Euro IV	Euro III	Euro III	Euro III
	Delivery cylinder bore	215mm	230mm	230mm	230mm	230mm	230mm	230mm	230mm
Pumping system	Distribution valve	"D" valve	"S" valve	"S" valve	"S" valve	"S" valve	"S" valve	"S" valve	"S" valve
	Theoretical concrete displacement	Low pressure 107 m³/h	Low pressure 138 m³/h	Low pressure 120m³/h	Low pressure 120m³/h	Low pressure 120m³/h	Low pressure 120m³/h	Low pressure 120m³/h	Low pressure 120m³/h
		High pressure 74 m³/h	High pressure 81 m³/h						
	Theoretical pumping pressure	Low pressure 5.4 MPa	Low pressure 5.5 MPa	Low pressure 7MPa	Low pressure 7MPa	Low pressure 7MPa	Low pressure 6.5 MPa	Low pressure 7MPa	Low pressure 7MPa
		High pressure 8.2 Mpa	High pressure 9.4 MPa						
	Hopper capacity	0.45m³	0.8m³	0.6m³	0.6m³	0.6m³	0.6m³	0.6m³	0.6m³
	Feeding height	1.48m	1.50m	1.55m	1.55m	1.55m	1.55m	1.53m	1.53m
	Slump scope	140-230mm	140-230mm	140-230mm	140-230mm	140-230mm	140-230mm	140-230mm	140-230mm
	Maximum aggregate size	40mm	40mm	40mm	40mm	40mm	40mm	40mm	40mm
	System pressure	31.5MPa	32 MPa	32 MPa	32 MPa	32 MPa	32 MPa	32 MPa	32 MPa
	Pressure cut-off	Automatic	Automatic (optional)	Automatic (optional)	Automatic (optional)	Automatic (optional)	Automatic (optional)	Automatic (optional)	Automatic (optional)
	Transmission	Model	Fast 8JS180T-B	MAL6U	MAL6U	MAL6U	G240-16/11.7-0.69	MJT7S	MJT7S
Operation mode		Manual	Manual	Manual	Manual	Manual	Manual	Manual	Manual
Forward gears		8	6	6	6	16	6	7	7
Pumping gear		8	5	5	5	14	5	6	6
Water pump	Drive method	Hydraulic drive	Hydraulic drive	Hydraulic drive	Hydraulic drive	Hydraulic drive	Hydraulic drive	Hydraulic drive	
	Cleaning output	12.7L/min	20L/min	20 L/min	20 L/min	20 L/min	20 L/min	20 L/min	



MODEL:	HJC5160THB 26M	HJC5270THB 37M	HJC5320THB 45M	HJC5320THB 47M	HJC5330THB 47M	HJC5390THB 48M	HJC5391THB 49M	HJC5391THB 51M	
Chassis model	Shanqi SX1167DR511	Isuzu CYZ51Q	Isuzu CYZ51Q	Isuzu CYZ51Q	Benz Actros3341	Isuzu CYH51Y	Isuzu CYH51Y	Isuzu CYH51Y	
Chassis drive mode	4x2	6x4	6x4	6x4	6x4	8x4	8x4	8x4	
All cabs equipped with A/C, sleeper									
Wheelbase	1-2 shaft	5100mm	4595 mm	4595 mm	4595 mm	4500mm	1850 mm	1850 mm	
	2-3 shaft		1310 mm	1310 mm	1310 mm	1350mm	4605 mm	4605 mm	
	3-4 shaft						1310 mm	1310 mm	
Tread	1 shaft	2036 mm	2065 mm	2065 mm	2065 mm	2034mm	2065 mm	2065 mm	
	2 shaft	1860 mm	1850 mm	1850 mm	1850 mm	1804mm	1850 mm	1850mm	
Tire model	11.00R22.5	295/80R22.5	295/80R22.5	295/80R22.5	315/80R22.5	295/80R22.5	295/80R22.5	295/80R22.5	
Minimum turning radius	9.5m	8.8m	8.8m	8.8m	9.9m	11.9m	11.9m	11.9m	
Braking distance	≤9.5m/30km/h	≤9.5m/30km/h	≤9.5m/30km/h	≤9.5m/30km/h	≤9.5m/30km/h	≤9.5m/30km/h	≤9.5m/30km/h	≤9.5m/30km/h	
Boom	Boom folding style	"Z"	"R"	"RZ"	"RZ"	"RZ"	"RZ"	"RZ"	
	Quantities	4 sections	4 sections	5 sections	5 sections	5 sections	5 sections	5 sections	
	Turning angle of boom	90°/180°/235°/220°	90°/180°/180°/240°	90°/180°/180°/250°/180°	90°/180°/180°/250°/180°	90°/180°/180°/250°/180°	90°/180°/180°/270°	90°/180°/180°/250°/180°	90°/180°/180°/250°/180°
	Rotation angle of turntable	Any angle	365°	±365°	±365°	±270°	365°	365°	
	Vertical reach	25.9m	36.6m	45m	46.8m	46.8m	47.6m	49m	
	Reach depth	12.6m	23.7m	28m	30m	30m	33.7m	34.2m	
	Horizontal reach	22.5m	32.6m	41m	42.8m	42.8m	43.6m	45m	
	Delivery pipe size	125mm	125mm	125mm	125mm	125mm	125mm	125mm	
	Hose length	3m	4m	3m	3m	3m	3m	3m	
	Hydraulic system pressure	27.4MPa	32MPa	35MPa	35MPa	35MPa	35MPa	35MPa	
Outrigger	Outrigger spread method	Manual	Rear swing	"X" shaped	"X" shaped	"X" shaped	Rear swing	Rear swing	
	Outrigger spread L-R front	5.4m	7.1m	9.23m	9.23m	9.23m	10.44m	10.68m	
	Outrigger spread L-R rear	5.4m	7.8m	9.99m	9.99m	9.99m	10.43m	11.17m	
Power system	Hydraulic system pressure	25MPa	18MPa	25MPa	25MPa	25MPa	25MPa	35MPa	
	Transfer case	Japan Nikko	Germany STIEBEL	Germany STIEBEL	Germany STIEBEL	Germany STIEBEL	Germany STIEBEL	Germany STIEBEL	
	Master pump	Japan Mitsubishi	Germany Rexroth	Germany Rexroth	Germany Rexroth	Germany Rexroth	Germany Rexroth	Germany Rexroth	
Control method	Boom/ outrigger pump	Japan	Germany Rexroth	Germany Rexroth	Germany Rexroth	Germany Rexroth	Germany Rexroth	Germany Rexroth	
	Manual/remote	Manual/remote	Manual/remote	Manual/remote	Manual/remote	Manual/remote	Manual/remote	Manual/remote	
Remote controller	Japan	Germany HBC	Germany HBC	Germany HBC	Germany HBC	Germany HBC	Germany HBC	Germany HBC	
Water tank capacity	420L	500L	300L	300L	300L	300L	300L	300L	
Tank capacity	200L	700L	740L	740L	740L	740L	820L	820L	
Hydraulic oil cooling method	Air cooled	Air cooled	Air cooled	Air cooled	Air cooled	Air cooled	Air cooled	Air cooled	
Lubrication method	Automatic hydraulic lubrication	Automatic hydraulic lubrication	Automatic hydraulic lubrication	Automatic hydraulic lubrication	Automatic hydraulic lubrication	Automatic hydraulic lubrication	Automatic hydraulic lubrication	Automatic hydraulic lubrication	

TRUCK-MOUNTED LINE PUMP SERIES

Specifications



MODEL:		UNIT	HJC5120THB	HJC5120THB-I	HJC5120THB-II	HJC5120THB-16II	HJC5120THB-16I	
Complete vehicle parameters	LxWxH	mm	8750x2500x3110		8750x2500x3127		8750x2500x3110	
	Feeding height	m	1.5					
	Gross weight	kg	12450					
Pumping system	Type	Horizontal single-action double-row hydraulic piston type						
	Distribution valve	"S" valve						
	Delivery status	Low-pressure/ High-pressure						
	Maximum aggregate size	mm	40(125A)					
	Slump scope	mm	80-230					
	Hopper capacity	m	0.8					
Power system	Diesel engine model	VOLVO TAD720VE		DEUTZ BFM1013ECP (-24)	DEUTZ BFM1013ECP (-26)	VOLVO TAD720VE		
	Power/rotating speed	kW/rpm	174/2300	174/2300	174/2300	195/2300	174/2300	
Main technical parameters	Theoretical concrete displacement	High-pressure status	m³/h	65	49	65	49	
		Low-pressure status	115	88	115	88		
	Theoretical pumping pressure	High-pressure status	MPa	12	16	12	16	
		Low-pressure status	6.4	8	6.4	8		
	Master cylinder bore x Stroke	mm	140x1700					
	Delivery cylinder bore x Stroke	mm	230x1700	200x1700	230x1700	200x1700		
	Pumping frequency	High-pressure status	time/min	15				
		Low-pressure status	27					
	Oil pressure of pumping system	MPa	32					
	Oil pressure of distribution system	MPa	19					
Oil pressure of outrigger, mixer, and washer system	MPa	12						
Hydraulic oil tank capacity	L	550						
Chassis parameters	Brand	Dongfeng						
	Chassis model	EQ1126KJ1					DFL1120B13	
	Engine model	ISDe160-30					ISDe180-40	
	Engine power	kW	118					132
	Wheelbase	mm	4700					
	Emission standard	China-III					China-IV	
	Fuel tank capacity	L	2x120					
Maximum speed	km/h	90						

CONCRETE TRAILER PUMP SERIES

Specifications



MODEL:		UNIT	HBT60	HBT6008Z	HBT6014	HBT8016	HBT8016R	HBT8016R-I	HBT8016R-II
Pumping system	Theoretical concrete displacement	m³/h	55	64.5	70-38	80-44	88-49	85-47	88-49
	Theoretical pumping pressure	MPa	6.7	8	7-13.5	8.5-16	8-16	8.5-15.6	8-16
	Distribution valve		Oblique gate valve	Oblique gate valve	"S" valve	"S" valve	"S" valve	"S" valve	"S" valve
	Slump scope	mm	80-230	50-230	80-230	80-230	80-230	80-230	80-230
	Delivery cylinder bore (diameter) x Stroke	mm	195x1400	200x1650	200x1800	200x1800	200x1800	200x1800	200x1800
	Master cylinder bore x Stroke	mm	90x1400	100x1650	130x1800	140x1800	140x1800	140x1800	140x1800
	Hopper capacity/Feeding height	m³/m	0.45/1.4	0.45/1.47	0.8/1.47	0.8/1.47	0.8/1.47	0.8/1.47	0.8/1.47
Power system	Max. aggregate size	mm	40(125A)	40(125A)	40(125A)	40(125A)	40(125A)	40(125A)	40(125A)
	Power/Rotating speed	kW/rpm	55/1480	75/1480	90/1480	132/1480	174/2300	162/2200	174/2300
Others	Brand of diesel engine	VOLVO						Weichai	DEUTZ
	Gross weight	kg	5400	5600	6300	7400	7300	7400	7200
	Overall dimensions (LxVxH)	mm	6450 x1820 x2150	6650 x2110 x2260	6530 x2110 x2260	6900 x2060 x2260	6930 x2110 x2640	7040 x2060 x2990	6930 x2110 x2640



▲ HBT8016R

OUR GLOBAL SALES AND SERVICE NETWORK

Shantui's global sales and service network now covers more than 120 countries and territories around the world.

Shantui has extended its well-regarded domestic market promise of ANYTIME, ANYWHERE SERVICE to its offices abroad and to all of its dealers and agents abroad. The network offers local training, has a mature parts delivery system and is still rapidly growing as Shantui's exports pick up steam.

Contact your local Shantui distributor or dealer to learn more about the ways that Shantui brings value to a wide range of construction and concrete handling projects.

